



MASTER LEDtube InstantFit HF T5

Master LEDtube HF 1200mm HO 26W 840 T5 OE

Philips MASTER LEDtube InstantFit T5 integrates a LED light source into a traditional fluorescent form factor. Its unique design creates a perfectly uniform visual appearance which cannot be distinguished from traditional fluorescents. The Philips MASTER LEDtube InstantFit T5 is the ideal solution for customers who have higher light output requirements and want to maximise value over the lifetime. The full energy savings & longer lifetime result in attractive payback times and TCO benefits.

Product data

General Information	
Cap base	G5 [G5]
EU RoHS compliant	Yes
Nominal lifetime (nom.)	60000 h
Switching cycle	50,000X
Technical type	26-54W

Light Technical	
Colour Code	840 [CCT of 4,000 K]
Beam Angle (Nom)	200 °
Luminous flux (nom.)	3900 lm
Colour designation	Cool White (CW)
Correlated Colour Temperature (Nom)	4000 K
Luminous efficacy (rated) (nom.)	150.00 lm/W
Colour consistency	<6
Color rendering index (nom.)	80
LLMF at end of nominal lifetime (nom.)	70 %

Operating and Electrical	
Input frequency	30 K to 60 K Hz
Power (Rated) (Nom)	26 W
Lamp current (max.)	620 mA
Lamp current (min.)	300 mA
Starting time (nom.)	0.5 s
Warm-up time to 60% light (nom.)	0.5 s
Power factor (nom.)	0.9
Voltage (Nom)	20-90 V

Temperature	
T-ambient (max.)	45 °C
T-ambient (min.)	-20 °C
T storage (max.)	65 °C
T storage (min.)	-40 °C
T-Case maximum (nom.)	55 °C

MASTER LEDtube InstantFit HF T5

Controls and Dimming

Dimmable Yes – Check ballast compatibility

Mechanical and Housing

Lamp Finish Frosted
Bulb material Glass
Product length 1200 mm

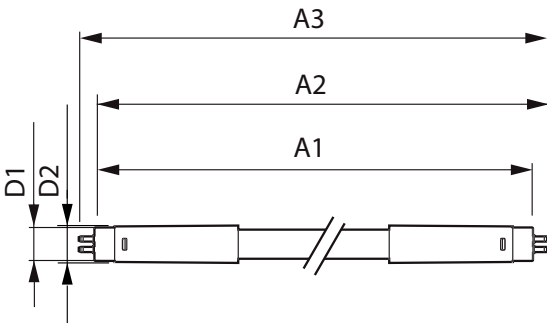
Approval and Application

Energy efficiency label (EEL) A++
Energy-saving product Yes
Approval marks RoHS compliance CE marking KEMA Keur certificate
Energy consumption kWh/1,000 hours 31 kWh

Product Data

Full product code 871869974953800
Order product name Master LEDtube HF 1200mm HO 26W 840 T5 OE
EAN/UPC – product 8718699749538
Order code 74953800
SAP numerator – quantity per pack 1
SAP numerator – packs per outer box 10
Material no. (12 NC) 929002352102
SAP net weight (piece) 0.240 kg

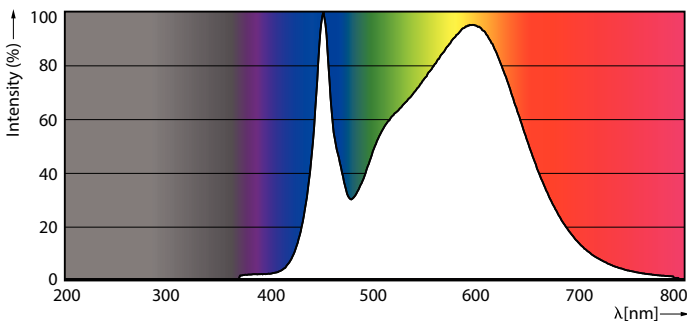
Dimensional drawing



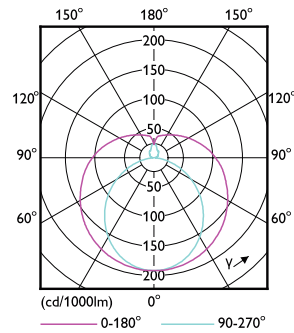
TLED 1200mm HF 26W 3900lm 4000K G5

Product	D1	D2	A1	A2	A3
Master LEDtube HF 1200mm HO 26W 840 T5 OE	15.5 mm	19 mm	1149 mm	1156 mm	1163 mm

Photometric data



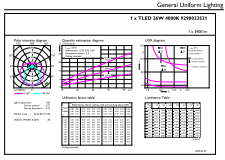
LEDtube MAS 26W G5 3900lm 840



LEDtube MAS 26W G5 3700lm

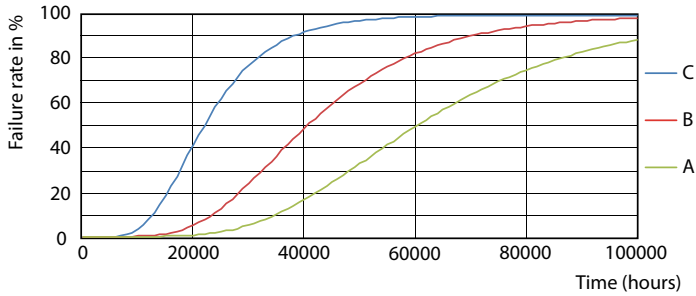
MASTER LEDtube InstantFit HF T5

Photometric data

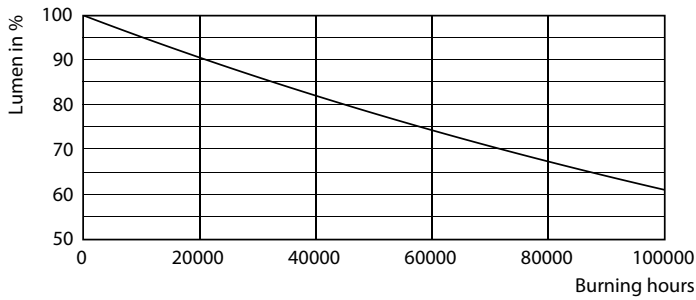


LEDtube MAS 26W G5 3900lm 840 1200mm

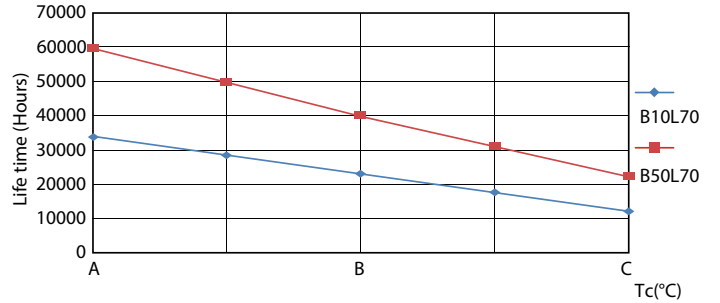
Lifetime



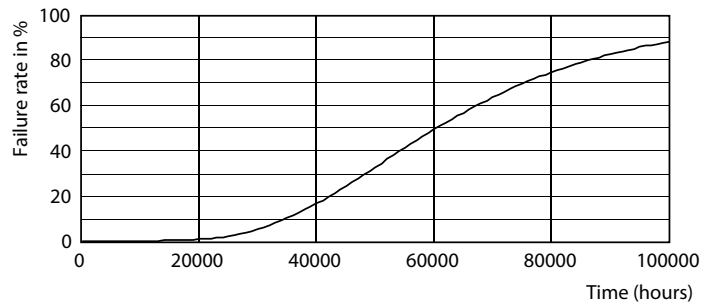
LEDtube_60K_FailureRate



LEDtube_60K



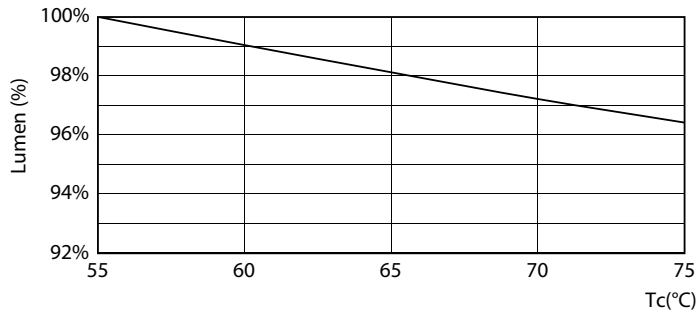
LEDtube_60K_LifetimeVsTc



LEDtube_60K

MASTER LEDtube InstantFit HF T5

Lifetime



LEDtube 26W 60K LumenVsTc 1

