

MasterConnect LEDtube EM/mains T8

MasterConnect LEDtube IA 600mm HO 7W840 T8

Introducing MasterConnect LED lamps – smart retrofit LED lamps that give you an easy and seamless way to upgrade to connected lighting. Simply set up with an intuitive app, MasterConnect LED lamps can be programmed to maximise energy savings, while providing wireless and automated light for your comfort and convenience. What's more, it is fully scalable and upgradable. If you want to enjoy further benefits, such as remote control or management dashboard, you can simply keep the currently installed lamps and add a gateway to experience all the advantages of a cloud-based system. There's no better way to take lighting solutions to the next level.

Product data

General Information	
Cap base	G13 [Medium Bi-Pin Fluorescent]
EU RoHS compliant	Yes
Nominal lifetime (nom.)	60000 h
Switching cycle	200,000X
Technical type	7-18W

Light Technical	
Colour Code	840 [CCT of 4,000 K]
Beam Angle (Nom)	160 °
Luminous flux (nom.)	1050 lm
Colour designation	Cool White (CW)
Correlated Colour Temperature (Nom)	4000 K
Luminous efficacy (rated) (nom.)	150.00 lm/W
Colour consistency	<6
Colour rendering index (nom.)	83

LLMF at end of nominal lifetime (nom.) 70 %	
---	--

Operating and Electrical	
Input frequency	50 to 60 Hz
Power (Rated) (Nom)	7 W
Lamp current (max.)	37 mA
Lamp current (min.)	34 mA
Starting time (nom.)	0.5 s
Warm-up time to 60% light (nom.)	0.5 s
Power factor (nom.)	0.9
Voltage (Nom)	220-240 V

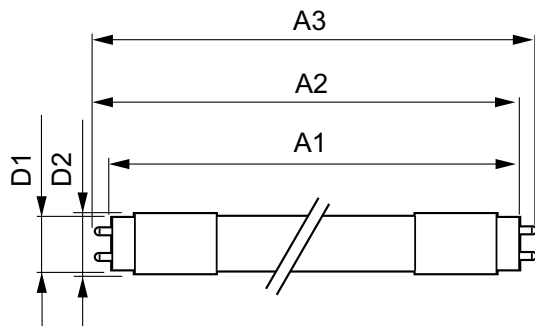
Temperature	
T-ambient (max.)	45 °C
T-ambient (min.)	-20 °C
T storage (max.)	65 °C

MasterConnect LEDtube EM/mains T8

T storage (min.)	-40 °C
T-Case maximum (nom.)	40 °C
Controls and Dimming	
Dimmable	Wireless Dim
Mechanical and Housing	
Product length	600 mm
Approval and Application	
Energy efficiency label (EEL)	A++
Energy-saving product	Yes
Approval marks	RoHS compliance CE marking KEMA Keur certificate

Energy consumption kWh/1,000 hours	7 kWh
Product Data	
Full product code	871869971748300
Order product name	MasterConnect LEDtube IA 600mm HO 7W840 T8
EAN/UPC – product	8718699717483
Order code	71748300
SAP numerator – quantity per pack	1
Numerator – packs per outer box	10
Material no. (12 NC)	929002295302
SAP net weight (piece)	0.150 kg

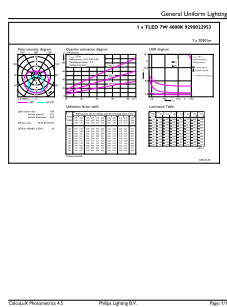
Dimensional drawing



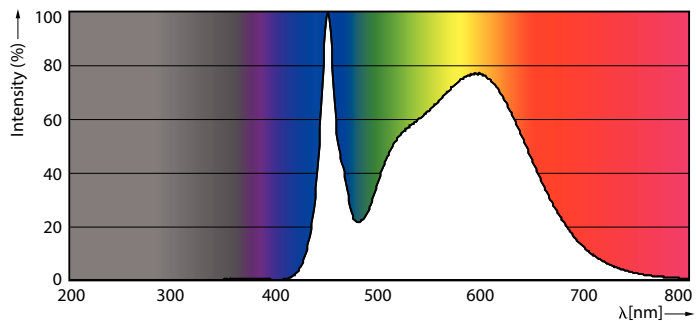
TLED T8 220-240V 7-18W 1050lm 4000K G13

Product	D1	D2	A1	A2	A3
MasterConnect LEDtube IA 600mm HO 7W840 T8	25.8 mm	28 mm	588.5 mm	595.5 mm	602.5 mm

Photometric data



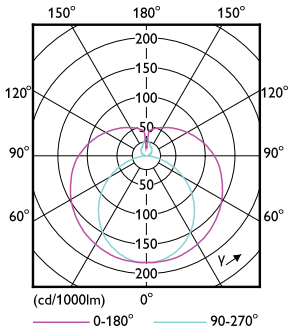
MC LEDtube 7W G13 1050lm 840



MC LEDtube G13 840

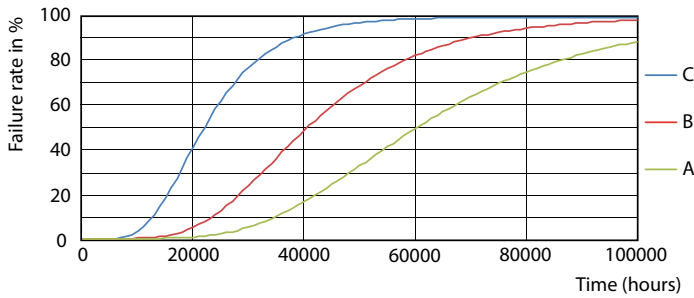
MasterConnect LEDtube EM/mains T8

Photometric data

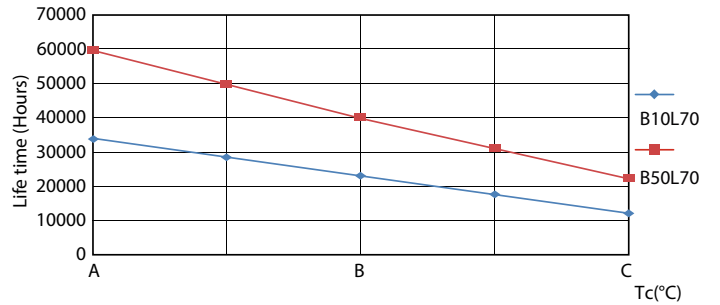


MC LEDtube G13

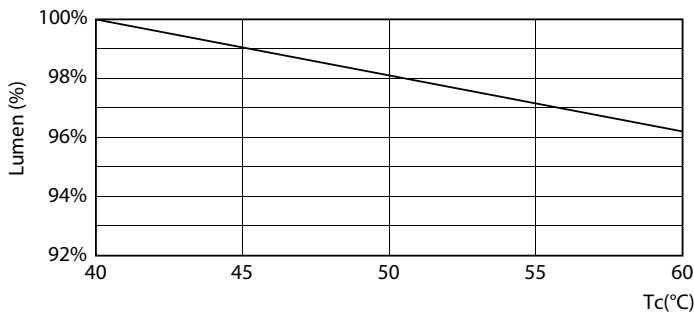
Lifetime



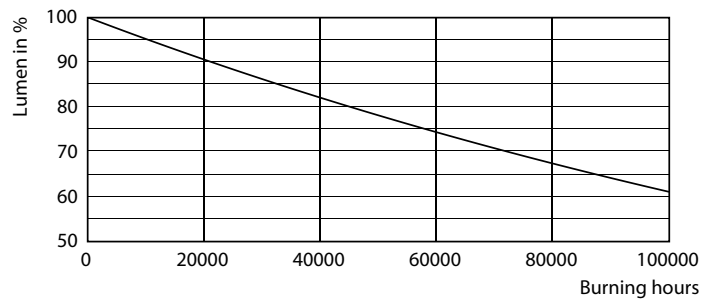
LEDtube_60K_FailureRate



LEDtube_60K_LifetimeVsTc



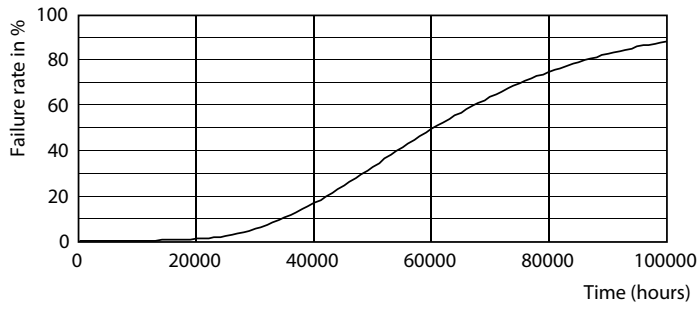
MC LEDtube 7W 60K LumenVsTc



LEDtube_60K

MasterConnect LEDtube EM/mains T8

Lifetime



LEDtube_60K

