



MASTER LEDtube Mains T5

MASTER LEDtube 1200mm HO 26W 840 T5

The new Philips Master LEDtube Mains T5 brings simplicity to your lighting project. You don't need to pay attention to the driver technology anymore. Thanks to a unique design, Philips MASTER LEDtube Mains T5 installs in luminaires operating on mains power connection. So simple to operate! Perfectly safe, reliable & easy to install, the Philips MASTER LEDtube Mains T5 is the ideal alternative to standard fluorescent tubes to maximise value over lifetime with high energy savings and lower maintenance costs.

Product data

General Information		Operating and Electrical	
Cap base	G5 [G5]	Input frequency	50 to 60 Hz
EU RoHS compliant	Yes	Power (Rated) (Nom)	26 W
Nominal lifetime (nom.)	50000 h	Starting time (nom.)	0.5 s
Switching cycle	200,000X	Warm-up time to 60% light (nom.)	0.5 s
Light Technical		Power factor (nom.)	0.9
Colour Code	840 [CCT of 4,000 K]	Voltage (Nom)	220-240 V
Beam Angle (Nom)	200 °	Temperature	
Luminous flux (nom.)	3900 lm	T-ambient (max.)	45 °C
Colour designation	Cool White (CW)	T-ambient (min.)	-20 °C
Correlated Colour Temperature (Nom)	4000 K	T storage (max.)	65 °C
Luminous efficacy (rated) (nom.)	150.00 lm/W	T storage (min.)	-40 °C
Colour consistency	<6	T-Case maximum (nom.)	72.1 °C
Colour rendering index (nom.)	80	Controls and Dimming	
LLMF at end of nominal lifetime (nom.)	70 %	Dimmable	No

MASTER LEDtube Mains T5

Mechanical and Housing

Bulb material	Glass
Product length	1200 mm

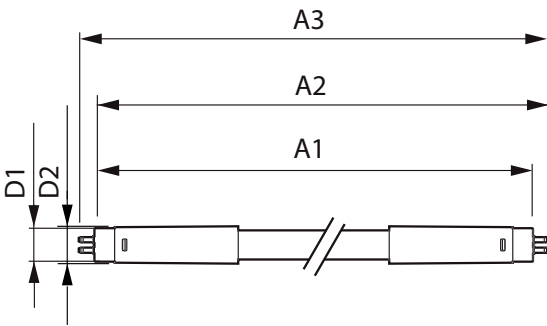
Approval and Application

Energy efficiency label (EEL)	A++
Energy-saving product	Yes
Approval marks	CE marking RoHS compliance KEMA Keur certificate
Energy consumption kWh/1,000 hours	26 kWh

Product Data

Full product code	871869681923400
Order product name	MASTER LEDtube 1200mm HO 26W 840 T5
EAN/UPC – product	8718696819234
Order code	81923400
SAP numerator – quantity per pack	1
Numerator – packs per outer box	10
Material no. (12 NC)	929001908602
SAP net weight (piece)	0.215 kg

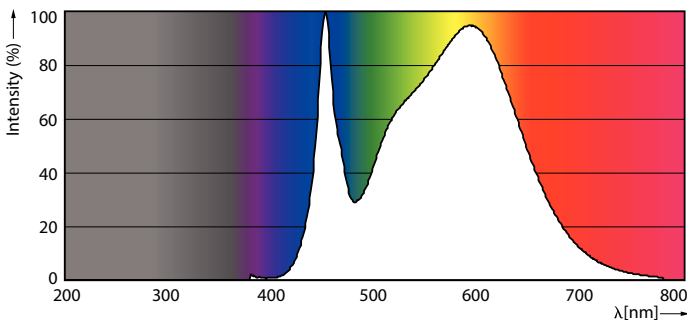
Dimensional drawing



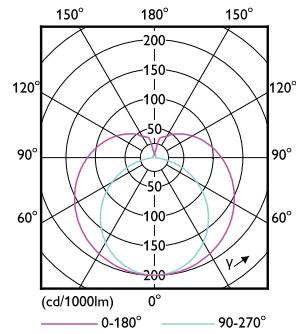
TLED 1200mm 26W-54W 3900lm 200D 4000K G5

Product	D1	D2	A1	A2	A3
MASTER LEDtube 1200mm HO 26W 840 T5	15 mm	16.9 mm	1149 mm	1156.1 mm	1163.2 mm

Photometric data



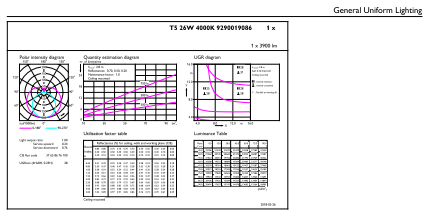
26W G5



26W G5 830 3000K

MASTER LEDtube Mains T5

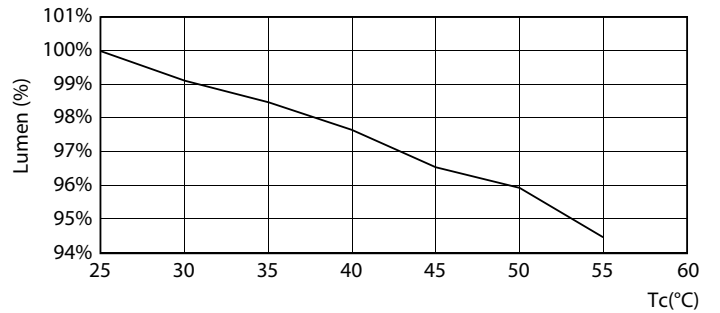
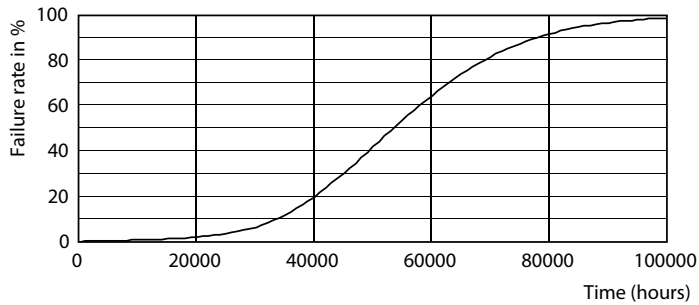
Photometric data



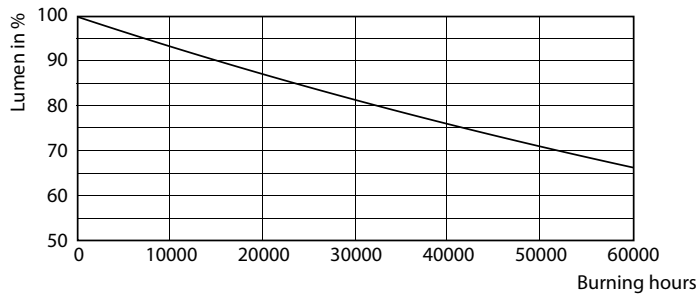
CeluxX Photometrics 4.5 Philips Lighting B.V. Page 1/7

26W G5 840 4000K

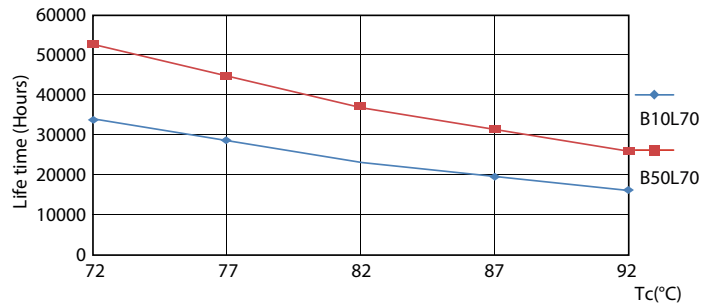
Lifetime



26W G5



26W G5



26W G5

26W G5

MASTER LEDtube Mains T5

Lifetime



26W G5

