



# MASTER LEDtube InstantFit HF T5

## Master LEDtube HF 1200mm HE 16.5W 840 T5

Philips MASTER LEDtube InstantFit T5 integrates a LED light source into a traditional fluorescent form factor. Its unique design creates a perfectly uniform visual appearance which cannot be distinguished from traditional fluorescents. The Philips MASTER LEDtube InstantFit T5 is the ideal solution for customers who have higher light output requirements and want to maximise value over the lifetime. The full energy savings & longer lifetime result in attractive payback times and TCO benefits.

### Product data

General Information	
Cap base	G5 [ G5]
EU RoHS compliant	Yes
Nominal lifetime (nom.)	50000 h
Switching cycle	50,000X
Light Technical	
Colour Code	840 [ CCT of 4,000 K]
Beam Angle (Nom)	200 °
Luminous flux (nom.)	2500 lm
Colour designation	Cool White (CW)
Correlated Colour Temperature (Nom)	4000 K
Luminous efficacy (rated) (nom.)	151.00 lm/W
Colour consistency	<6
Colour rendering index (nom.)	83
LLMF at end of nominal lifetime (nom.)	70 %
Operating and Electrical	
Input frequency	35000-70000 Hz

Power (Rated) (Nom)	16.5 W
Lamp current (max.)	350 mA
Lamp current (min.)	150 mA
Starting time (nom.)	0.5 s
Warm-up time to 60% light (nom.)	0.5 s
Power factor (nom.)	0.9
Voltage (Nom)	90-130 V
Temperature	
T-ambient (max.)	45 °C
T-ambient (min.)	-20 °C
T storage (max.)	65 °C
T storage (min.)	-40 °C
T-Case maximum (nom.)	65 °C
Controls and Dimming	
Dimmable	No

# MASTER LEDtube InstantFit HF T5

## Mechanical and Housing

Bulb material	Glass
Product length	1200 mm

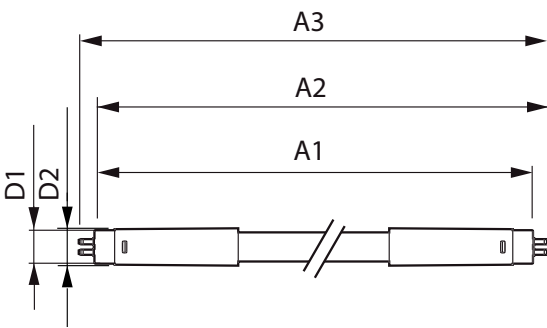
## Approval and Application

Energy efficiency label (EEL)	A++
Energy-saving product	Yes
Approval marks	CE marking RoHS compliance KEMA Keur certificate
Energy consumption kWh/1,000 hours	20 kWh

## Product Data

Full product code	871869674331700
Order product name	Master LEDtube HF 1200mm HE 16.5W 840 T5
EAN/UPC – product	8718696743317
Order code	74331700
Numerator – quantity per pack	1
Numerator – packs per outer box	10
SAP material	929001391102
SAP net weight (piece)	0.159 kg

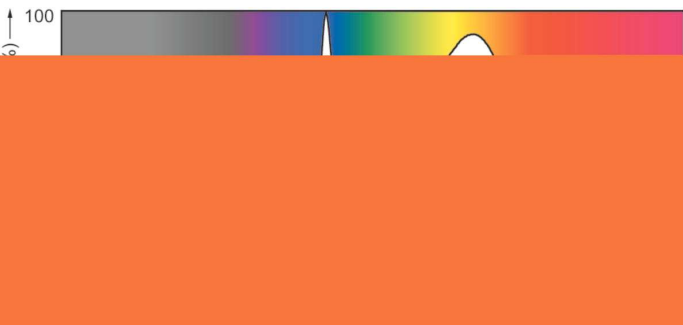
## Dimensional drawing



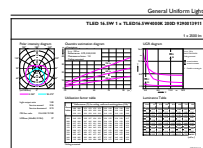
TLED 1200mm 230V14W-28W 2100lm 160D 400

Product	D1	D2	A1	A2	A3
Master LEDtube HF 1200mm HE 16.5W 840 T5	15.5 mm	18.8 mm	1149 mm	1156.1 mm	1163.2 mm

## Photometric data



LEDtube 13W G13 2100lm



LEDtube 1200mm 16-5W G5 840 2500lm

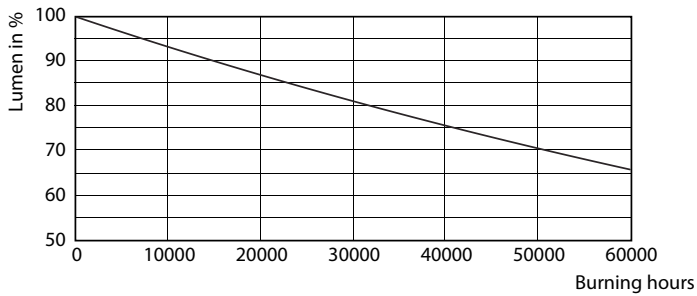
# MASTER LEDtube InstantFit HF T5

## Photometric data

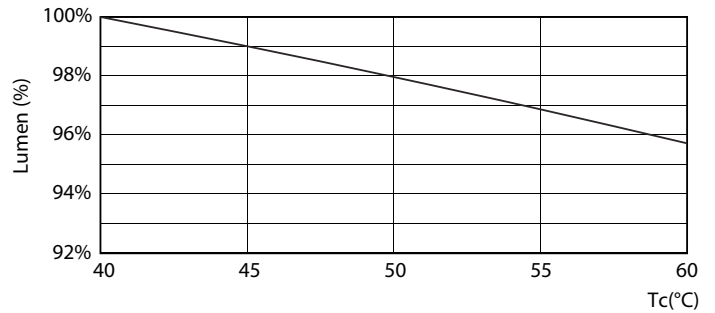


LEDtube 600mm 8W G5 830 1000lm

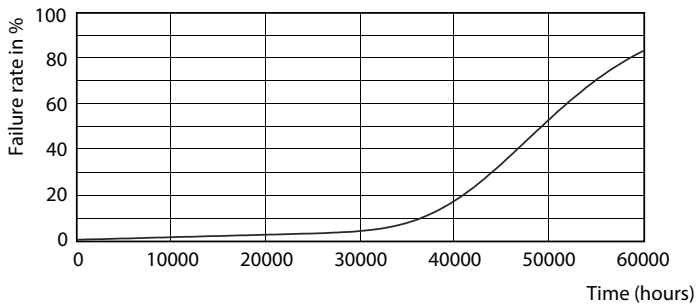
## Lifetime



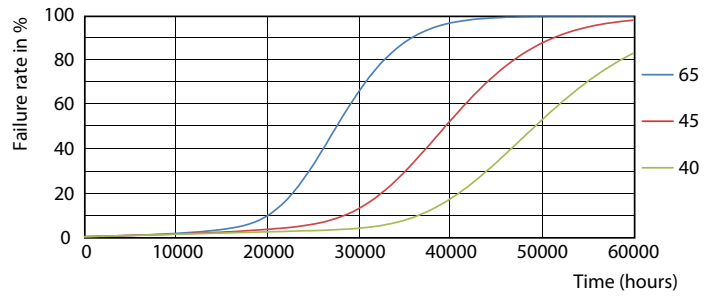
LEDtube 600mm 8W G5 830 1000lm



LEDtube 600mm 8W G5 830 1000lm



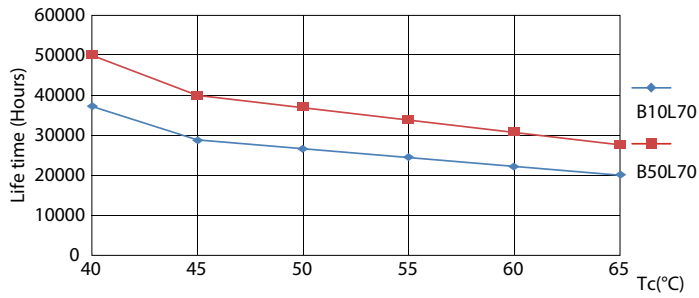
LEDtube 600mm 8W G5 830 1000lm



LEDtube 600mm 8W G5 830 1000lm

# MASTER LEDtube InstantFit HF T5

## Lifetime



LEDtube 600mm 8W G5 830 1000lm

