



# MASTER PL-T Xtra 4 Pin

## MASTER PL-T XTRA 32W/840/4P 1CT/5X10BOX

Energy saving compact fluorescent lamp Compact long-arc low-pressure mercury discharge lamp Envelope consists of 6 parallel narrow fluorescent tubes

### Warnings and Safety

- Lamp light technical and electrical characteristics are influenced by operating conditions, i.e. lamp ambient temperature and operating position as well as applied HF control gear
- Shorter lamp life when often switching and not well pre-heated electrodes
- A lamp breaking is extremely unlikely to have any impact on your health. If a lamp breaks, ventilate the room for 30 minutes and remove the parts, preferably with gloves. Put them in a sealed plastic bag and take it to your local waste facilities for recycling. Do not use a vacuum cleaner.

### Product data

General Information		Correlated Colour Temperature (Nom)	
Cap base	GX24Q-3 [ GX24q-3]	Luminous efficacy (rated) (nom.)	75 lm/W
Life to 50% failures preheat (nom.)	33000 h	Colour rendering index (nom.)	82
LSF preheat 2,000 hours rated	99 %	LLMF 2000 h Rated	92 %
LSF preheat 4,000 hours rated	98 %	LLMF 4000 h Rated	88 %
LSF preheat 6,000 hours rated	97 %	LLMF 6000 h Rated	86 %
LSF preheat 8,000 hours rated	96 %	LLMF 8000 h Rated	84 %
LSF preheat 16,000 hours rated	94 %	LLMF 12000 h Rated	81 %
LSF preheat 20,000 hours rated	90 %	LLMF 16000 h Rated	79 %
		LLMF 20000 h Rated	78 %
Light Technical		Operating and Electrical	
Colour Code	840 [ CCT of 4,000 K]	Power (Rated) (Nom)	32.0 W
Luminous flux (nom.)	2300 lm	Lamp current (nom.)	0.320 A
Luminous flux (rated) (nom.)	2400 lm		
Colour designation	Cool White (CW)		

# MASTER PL-T Xtra 4 Pin

Temperature	
Design temperature (nom.)	28 °C
Controls and Dimming	
Dimmable	Yes
Mechanical and Housing	
Cap-base information	4P
Approval and Application	
Energy efficiency label (EEL)	A
Mercury (Hg) content (nom.)	3.0 mg
Energy consumption kWh/1,000 hours	35 kWh

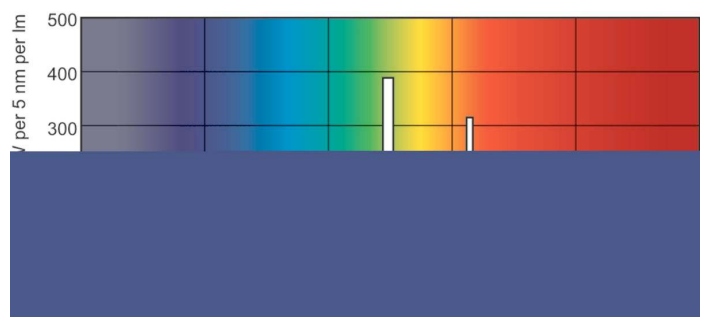
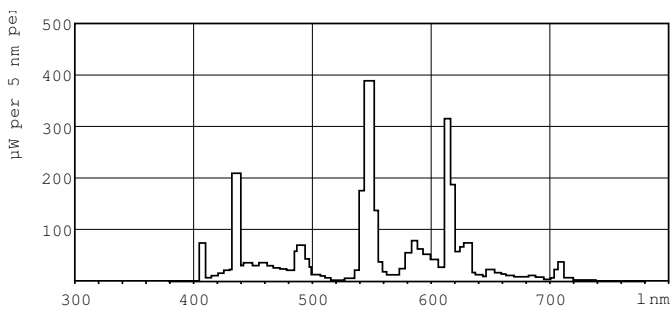
Product Data	
Full product code	871150089743570
Order product name	MASTER PL-T Xtra 32W/840/4P 1CT/5X10BOX
EAN/UPC – product	8711500897435
Order code	89743570
Local code	32PLT8404PXTRA
SAP numerator – quantity per pack	1
Numerator – packs per outer box	50
Material no. (12 NC)	927912584014
SAP net weight (piece)	70.000 g
ILCOS code	FSMH-32/40/1B-L/P-GX24q=3

## Dimensional drawing

Product	D (max)	A (max)	B (max)	C (max)
MASTER PL-T Xtra 32W/840/4P 1CT/5X10BOX	41.0 mm	98.7 mm	123.0 mm	138.7 mm

## PL-T Xtra 32W/840/4P M

### Photometric data

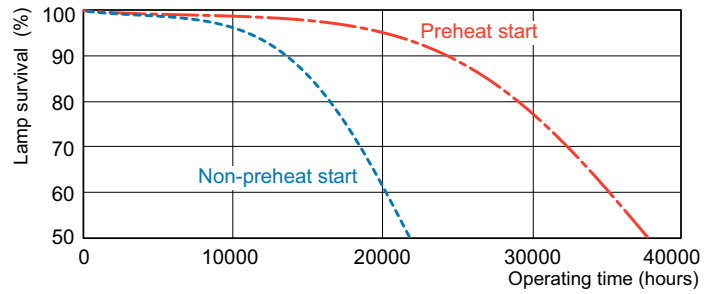
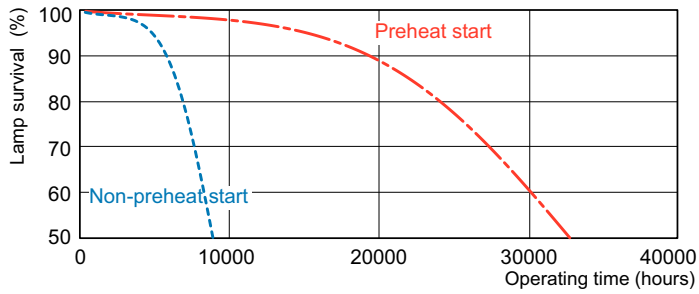


## Lightcolour /840

## Lightcolour /840

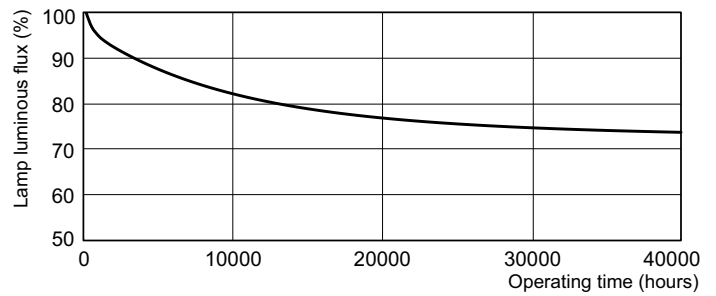
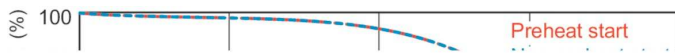
# MASTER PL-T Xtra 4 Pin

## Lifetime



LDLE\_PLT4PLTG\_0001-Life expectancy diagram

LDLE\_PLT4PLTG\_0002-Life expectancy diagram



LDLE\_PLT4PLTG\_0003-Life expectancy diagram

LDLM\_PLT4PLTG\_0001-Lumen maintenance diagram

