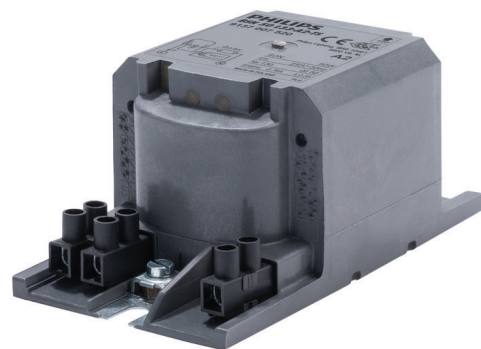


PHILIPS

Lighting



HID-HeavyDuty BSN semi-parallel for SON/CDO/MH/HPI

BSN 50 L33-A2-TS 230V 50Hz

Encapsulated electromagnetic copper/iron ballasts for use with an external semi-parallel ignitor for CDM, CDO, MH, HPI (Plus) and SON lamps

Product data

General Information		System characteristics	
Application code	L33-A2-TS	Ballast contact wire cross section	2.5 mm ²
Design	HD1-118	Connector type	Screw
Lamp type	SON	Capacitor	10µF/250V
Number of lamps	1 piece/unit	Rated ballast-lamp power	50 W
Operating and Electrical		Recommended ignitor	for SON lamps ignitor SND57 (913700184966) or series digital SUD10 (913700195891)
Input Voltage	230 V	Temperature	
Input frequency	50 Hz	T storage (max.)	130 °C
Power factor 100% load (nom.)	0.85	T storage (min.)	-30 °C
Mains voltage performance (AC)	-8% - +6%	T-winding (max.)	130 °C
Mains voltage safety (AC)	-10% - +10%	Delta-T normal conditions	50 °C
Input current with PF correction	0.35 A	Approval and Application	
Input current without PF Correction	0.76 A	Active temperature protection	Yes
Power factor without PF compensation (nom.)	0.35	Approval marks	CE marking ENEC certificate
Power losses (nom.)	8.6 W		
Wiring			
Wire strip length	6.0 mm		

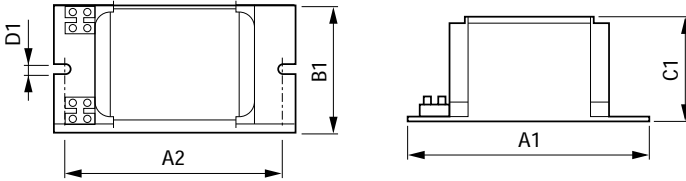
HID-HeavyDuty BSN semi-parallel for SON/CDO/MH/HPI

Product Data

Full product code	871869674080400
Order product name	BSN 50 L33-A2-TS 230V 50Hz
EAN/UPC – product	8718696740804
Order code	74080400
Numerator – quantity per pack	1

SAP numerator – packs per outer box	6
Material no. (12 NC)	913700752026
SAP net weight (piece)	1.270 kg

Dimensional drawing



Product	A1	A2	B1	C1	D1
BSN 50 L33-A2-TS 230V 50Hz	118 mm	103 mm	65 mm	53 mm	6.2 mm

BSN 50 L33-A2-TS 230V 50Hz

