



# PrimaVision Mini for CDM

## HID-PV m 20 /S CDM 220-240V 50/60Hz

Miniature HID electronic gear for PGJ5 CDM lamps – freeing up the boundaries of creativity and innovation in luminaire design

### Product data

General Information	
Application code	HPF
Type version	mk2
Lamp type	CDM
Number of lamps	1 piece/unit
Suitable for outdoor use	No
Number of products on MCB (16 A type B) (nom.)	32
Automatic restart	Yes

Operating and Electrical	
Input Voltage	220 to 240 V
Input frequency	50 to 60 Hz
Minimum mains voltage operation (min.)	198 V
Power factor 100% load (nom.)	0.95
Ignition voltage (max.)	4.5 kV
Ignition voltage (min.)	3.3 kV
Ignition switch-off time (nom.)	21 min
Mains voltage performance (AC)	198-254V
Mains voltage safety (AC)	180-264V
Earth leakage current (max.)	0.5 mA
Inrush current width	0.25 ms

Constant wattage deviation	-3%/+3%
Power losses (nom.)	3.5 W
Inrush current peak (max.)	15 A

Wiring	
Cable capacity output wires mutual (nom.)	50 pF
Cable length from device to lamp	0.5 m
Wire strip length	8.5-9.5 mm
Ballast contact wire cross section	0.75-1.50 mm <sup>2</sup>
Connector type	Insert

System characteristics	
Rated ballast-lamp power	20 W

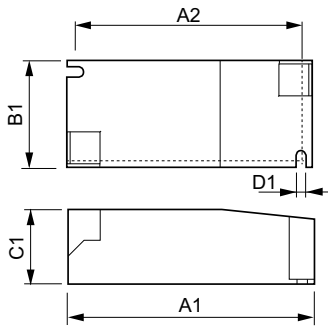
Temperature	
T-ambient (max.)	55 °C
T-ambient (min.)	-20 °C
T storage (max.)	80 °C
T storage (min.)	-25 °C
T-case lifetime (nom.)	80 °C
T-Case maximum (max.)	80 °C

## PrimaVision Mini for CDM

Mechanical and Housing	
Housing	/S
Approval and Application	
Active temperature protection	Yes
EMI 9 kHz ... 300 MHz	CISPR 15 ed 7.2 / 2009
Vibration standard	IEC68-2-6 F c
Bumps standard	IEC 68-2-29 Eb
Approval marks	CE marking ENEC certificate VDE certificate
Humming and noise level	< 25 dB(A)
Product Data	
Full product code	871829167159600

Order product name	HID-PV m 20 /S CDM 220-240V 50/60Hz
EAN/UPC – product	8718291671596
Order code	67159600
Local order code	PVM20SHPF
SAP numerator – quantity per pack	1
SAP numerator – packs per outer box	12
Material no. (12 NC)	913700696066
SAP net weight (piece)	0.115 kg

### Dimensional drawing



HID-PV m 20 /S CDM HPF 220-240V 50/60Hz

Product
HID-PV m 20 /S CDM 220-240V 50/60Hz

