



HF-Matchbox Blue

HF-M BLUE 124 SH TL/TL5/PL-L 230-240V

HF-Matchbox Blue is an affordable, reliable, compact, lightweight and high-frequency ballast for use with system wattages below 25 W in combination with TL mini, TL-D, TL5 and TL5c, PL-T/C, and PL-L/S lamps. The HF-M Blue range has a robust design, meets all relevant international safety and performance standards and has an energy efficiency index (CELMA EEI) of A2.

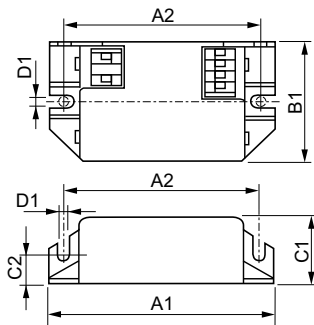
Product data

General Information		Cable length from device to lamp	
Application code	mk1	Cable length hot-wiring	1.50 m
Lamp type	TL/TL5/PL-L	Wire strip length	0.30 m
Number of lamps	1 piece/unit	Input terminal cross section	8.0-9.0 mm
Number of products on MCB (16 A type B) (nom.)	60	Output terminal cross section	0.50-1.50 mm ²
Automatic restart	Yes		
Operating and Electrical		System characteristics	
Input Voltage	230 to 240 V	Rated ballast-lamp power	24 W
Input frequency	50 to 60 Hz	Temperature	
Power factor 100% load (nom.)	0.64	T-ambient (max.)	40 °C
Ignition time (max.)	0.5 s	T-ambient (min.)	-10 °C
Mains voltage performance (AC)	-8%~+6%	T-Case maximum (max.)	75 °C
Mains voltage safety (AC)	-10%~+10%	Mechanical and Housing	
Power losses (nom.)	1.9-2.2 W	Housing	SH
Wiring		Emergency Operation	
Connector type input terminals	Insert	Battery voltage lamp ignition	194-254 V
Colour input terminals	Orange	Approval and Application	
Colour output terminals	Grey	IP classification	IP 20 [Ingress Protection 20]
Connector type output terminals	Insert		

HF-Matchbox Blue

Approval marks	F-Marking CE marking VDE certificate CB Certificate	Order code	53638930
		Local order code	HFMBLUE124SH
Product Data		SAP numerator – quantity per pack	1
Full product code	871150053638930	Numerator – packs per outer box	50
Order product name	HF-M BLUE 124 SH TL/TL5/PL-L 230-240V	Material no. (12 NC)	913700417966
EAN/UPC – product	8711500536389	SAP net weight (piece)	0.040 kg

Dimensional drawing



HF-M BLUE 124 SH TL/TL5/PL-L 230-240V

Product

HF-M BLUE 124 SH TL/TL5/PL-L 230-240V

