



CoreLine Panel – the clear choice for LED

CoreLine Panel

Whether for a new building or renovation of an existing space, customers want lighting solutions that provide quality of light and substantial energy and maintenance savings. The new CoreLine Panel range of LED products can be used to replace functional luminaires in general lighting applications. Both Non-Office Compliant (NOC) version and Office Compliant version (OC) are now available. The process of selecting, installing and maintaining is so easy – it's a simple switch. Also available as an Interact Ready wireless CoreLine luminaire panel that works with Interact Pro lighting software and InteractReady devices to provide a connected lighting system for SMEs

Benefits

- Enables a simple switch from basic conventional luminaires to LED luminaires
- Energy savings of up to 50% compared to functional TL-D luminaires
- Uniform surface of light
- Easy connection(with looping)

Features

- Integrated LED technology
- Slim square housing
- Multi-colour and lumen switch: 3000K (3400 and 4000lm) & 4000K (3600 and 4300lm)
- Office Compliant (OC) & Non-Office Compliant (NOC) versions available
- Suspension, plaster ceiling and surface-mounting installations are possible with accessories
- Optional 3 hour emergency lighting versions available
- Tp(a) version available

CoreLine Panel

Application

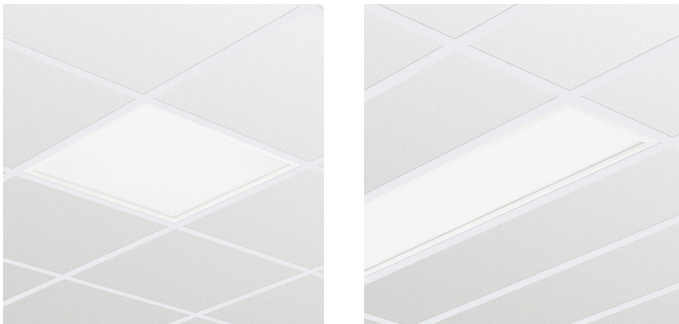
- Offices
- Retail
- Healthcare
- Education

Specifications

Type	RC132V (module size 600 mm version) RC133V (module size 625 mm version)
Ceiling type	Exposed T-bar ceiling
Ceiling grid	Module size in length: 600 mm Module size in length: 625 mm
Light source	Non-replaceable LED module
Power (+/-10%)	Standard version: 29 W High Lumen: 34.5 W
Beam angle	Standard version: 90° NOC version: 120°
Luminous flux	3,400-4,300 lm
Correlated Colour	3,000 K
Temperature	4,000 K
Colour Rendering Index	> 80
Lumen maintenance at median useful life*	L80
50,000 h	

Control gear failure rate at median useful life	5%
50,000 h	
Performance Ambient Temperature Tq	+25 °C
Operating temperature range	+10 to +40 °C
Driver	Built-in
Mains voltage	230 or 240 V/50-60 Hz
Material	Housing: Steel Optical cover: Polystyrene
Colour	White (RAL 9003)
Connection	Quick connector or Wieland/Adels (W)
Maintenance	Optical module sealed for life; no internal cleaning required
Installation	Individual; lay-in in exposed ceiling grids No through-wiring possible
Remarks	Includes safety cable

Versions



CoreLine Panel

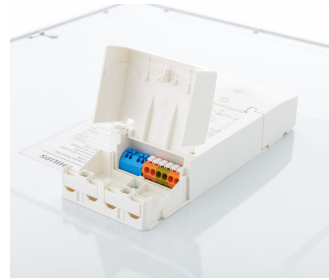
Product details



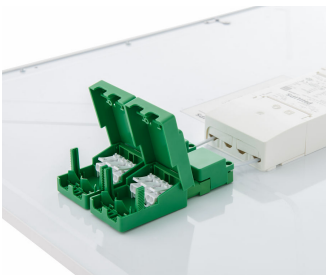
Edge View



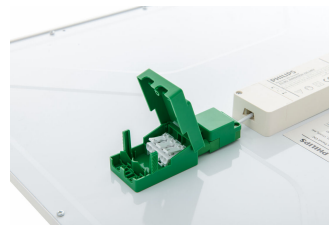
PSD backcover Square



Dimming (PSD) Driver



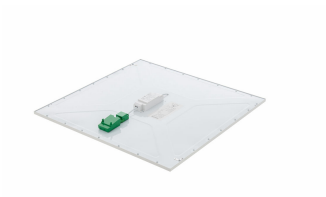
Dimming (PSD) Connector



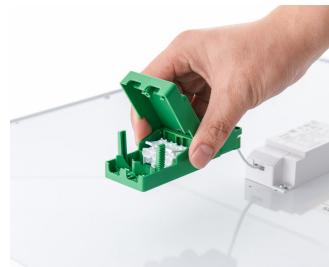
On/off (PSU) Connector



On/off (PSU) Driver



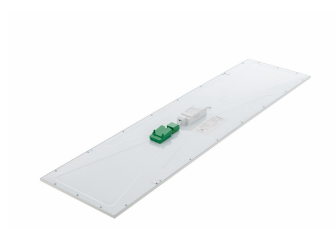
PSU backcover Square



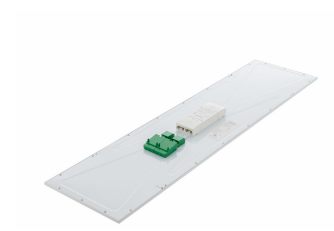
On/off (PSU) Connector with hand

CoreLine Panel

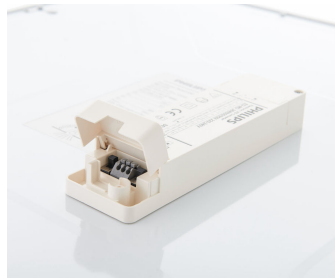
Product details



PSU backcover Rectangular



PSD backcover Rectangular



On/off Multicolour/Lumen (PSU)
Driver



PSU MultiColour/Lumen backcover
Square



Panel_Acc-
RC125Z_SMB_W30L120 -DPP.TIF

Accessories



CORELINE PANEL NOC ACC.

Ordercode 07332299

CoreLine Panel

Application Conditions

Ambient temperature range +10 to +40 °C

Approval and Application

Ingress protection code IP20/44

Operating and Electrical

Input Voltage 220 to 240 V

General Information

CE mark CE mark

Driver included Yes

Light source replaceable No

Number of gear units 1 unit

Initial Performance (IEC Compliant)

Luminous flux tolerance +/-10%

Mechanical and Housing

Colour White

Application Conditions

Order Code	Full Product Name	Maximum dimming level	Suitable for random switching
40133700	RC132V LED36S/840 W60L60 ELB3 IA1 NOC	-	Yes
96705500	RC132V G4 LED36S/840 W60L60 NOC IA1	1%	Not applicable
96706200	RC132V G4 LED34S/830 W60L60 NOC IA1	1%	Not applicable
96707900	RC132V G4 LED36S/840 W60L60 OC IA1 ELB3	1%	Not applicable
96708600	RC132V G4 LED36S/840 W60L60 OC IA1	1%	Not applicable
96709300	RC132V G4 LED34S/830 W60L60 OC IA1	1%	Not applicable
96710900	RC132V G4 LED36S/840 PSD W60L60 OC ELB3	1%	Not applicable
96711600	RC132V G4 LED36S/840 PSU W60L60 OC ELB3	1%	Not applicable
96719200	RC132V G4 LED43S/840 PSD W60L60 OC ELB3	1%	Not applicable
96720800	RC132V G4 LED43S/840 W60L60 OC IA1	1%	Not applicable
96722200	RC132V G4 LED36/840 PSU W60L60 OC TP(a)E	Not applicable	Not applicable
36035500	RC132V G4 LED36S/840 PSU W60L60 NOC	Not applicable	Not applicable
36036200	RC132V G4 LED34S/830 PSU W60L60 NOC	Not applicable	Not applicable
36037900	RC132V G4 LED43S/840 PSU W60L60 NOC	Not applicable	Not applicable
36041600	RC132V G4 LED36S/840 PSU W60L60 OC	Not applicable	Not applicable
36042300	RC132V G4 LED34S/830 PSU W60L60 OC	Not applicable	Not applicable
36045400	RC132V G4 LED36S/840 PSD W60L60 OC	1%	Not applicable
36046100	RC132V G4 LED34S/830 PSD W60L60 OC	1%	Not applicable
36047800	RC132V G4 LED43S/840 PSD W60L60 OC	1%	Not applicable
36053900	RC132V G4 LED36/840 PSU W60L60 OC TP(a)	Not applicable	Not applicable
36054600	RC132V G4LED34_43S/830_840 PSU W60L60 OC	Not applicable	Not applicable
40134400	RC132V LED36S/840 W30L120 ELB3 IA1 NOC	-	Yes
96712300	RC132V G4 LED36S/840 W30L120 NOC IA1	1%	Not applicable
96713000	RC132V G4 LED36S/840 W30L120 OC IA1	1%	Not applicable
96714700	RC132V G4 LED36S/840 PSU W30L120 OC ELB3	1%	Not applicable
96715400	RC132V G4 LED36S/840 PSD W30L120 OC ELB3	1%	Not applicable
36040900	RC132V G4 LED36S/840 PSU W30L120 NOC	Not applicable	Not applicable
36044700	RC132V G4 LED36S/840 PSU W30L120 OC	Not applicable	Not applicable
36051500	RC132V G4 LED36S/840 PSD W30L120 OC	1%	Not applicable
36052200	RC132V G4 LED34S/830 PSD W30L120 OC	1%	Not applicable
36056000	RC132V G4LED34_43S/830_840 PSUW30L120 OC	Not applicable	Not applicable

Approval and Application

Order Code	Full Product Name	Mech. impact protection code
40133700	RC132V LED36S/840 W60L60 ELB3 IA1 NOC	IK02
96705500	RC132V G4 LED36S/840 W60L60 NOC IA1	IK03
96706200	RC132V G4 LED34S/830 W60L60 NOC IA1	IK03
96707900	RC132V G4 LED36S/840 W60L60 OC IA1 ELB3	IK03
96708600	RC132V G4 LED36S/840 W60L60 OC IA1	IK03
96709300	RC132V G4 LED34S/830 W60L60 OC IA1	IK03
96710900	RC132V G4 LED36S/840 PSD W60L60 OC ELB3	IK03
96711600	RC132V G4 LED36S/840 PSU W60L60 OC ELB3	IK03
96719200	RC132V G4 LED43S/840 PSD W60L60 OC ELB3	IK03
96720800	RC132V G4 LED43S/840 W60L60 OC IA1	IK03
96722200	RC132V G4 LED36/840 PSU W60L60 OC TP(a)E	IK03
36035500	RC132V G4 LED36S/840 PSU W60L60 NOC	IK03
36036200	RC132V G4 LED34S/830 PSU W60L60 NOC	IK03

Order Code	Full Product Name	Mech. impact protection code
36037900	RC132V G4 LED43S/840 PSU W60L60 NOC	IK03
36041600	RC132V G4 LED36S/840 PSU W60L60 OC	IK03
36042300	RC132V G4 LED34S/830 PSU W60L60 OC	IK03
36045400	RC132V G4 LED36S/840 PSD W60L60 OC	IK03
36046100	RC132V G4 LED34S/830 PSD W60L60 OC	IK03
36047800	RC132V G4 LED43S/840 PSD W60L60 OC	IK03
36053900	RC132V G4 LED36/840 PSU W60L60 OC TP(a)	IK03
36054600	RC132V G4LED34_43S/830_840 PSU W60L60 OC	IK03
40134400	RC132V LED36S/840 W30L120 ELB3 IA1 NOC	IK02
96712300	RC132V G4 LED36S/840 W30L120 NOC IA1	IK03
96713000	RC132V G4 LED36S/840 W30L120 OC IA1	IK03
96714700	RC132V G4 LED36S/840 PSU W30L120 OC ELB3	IK03
96715400	RC132V G4 LED36S/840 PSD W30L120 OC ELB3	IK03

CoreLine Panel

Order Code	Full Product Name	Mech. impact protection code
36040900	RC132V G4 LED36S/840 PSU W30L120 NOC	IK03
36044700	RC132V G4 LED36S/840 PSU W30L120 OC	IK03
36051500	RC132V G4 LED36S/840 PSD W30L120 OC	IK03

Order Code	Full Product Name	Mech. impact protection code
36052200	RC132V G4 LED34S/830 PSD W30L120 OC	IK03
36056000	RC132V G4LED34_43S/830_840 PSUW30L120 OC	IK03

Controls and Dimming

Order Code	Full Product Name	Dimmable
40133700	RC132V LED36S/840 W60L60 ELB3 IA1 NOC	Yes
96705500	RC132V G4 LED36S/840 W60L60 NOC IA1	Yes
96706200	RC132V G4 LED34S/830 W60L60 NOC IA1	Yes
96707900	RC132V G4 LED36S/840 W60L60 OC IA1 ELB3	Yes
96708600	RC132V G4 LED36S/840 W60L60 OC IA1	Yes
96709300	RC132V G4 LED34S/830 W60L60 OC IA1	Yes
96710900	RC132V G4 LED36S/840 PSD W60L60 OC ELB3	Yes
96711600	RC132V G4 LED36S/840 PSU W60L60 OC ELB3	No
96719200	RC132V G4 LED43S/840 PSD W60L60 OC ELB3	Yes
96720800	RC132V G4 LED43S/840 W60L60 OC IA1	Yes
96722200	RC132V G4 LED36/840 PSU W60L60 OC TP(a)E	No
36035500	RC132V G4 LED36S/840 PSU W60L60 NOC	No
36036200	RC132V G4 LED34S/830 PSU W60L60 NOC	No
36037900	RC132V G4 LED43S/840 PSU W60L60 NOC	No
36041600	RC132V G4 LED36S/840 PSU W60L60 OC	No
36042300	RC132V G4 LED34S/830 PSU W60L60 OC	No

Order Code	Full Product Name	Dimmable
36045400	RC132V G4 LED36S/840 PSD W60L60 OC	Yes
36046100	RC132V G4 LED34S/830 PSD W60L60 OC	Yes
36047800	RC132V G4 LED43S/840 PSD W60L60 OC	Yes
36053900	RC132V G4 LED36/840 PSU W60L60 OC TP(a)	No
36054600	RC132V G4LED34_43S/830_840 PSU W60L60 OC	No
40134400	RC132V LED36S/840 W30L120 ELB3 IA1 NOC	Yes
96712300	RC132V G4 LED36S/840 W30L120 NOC IA1	Yes
96713000	RC132V G4 LED36S/840 W30L120 OC IA1	Yes
96714700	RC132V G4 LED36S/840 PSU W30L120 OC ELB3	No
96715400	RC132V G4 LED36S/840 PSD W30L120 OC ELB3	Yes
36040900	RC132V G4 LED36S/840 PSU W30L120 NOC	No
36044700	RC132V G4 LED36S/840 PSU W30L120 OC	No
36051500	RC132V G4 LED36S/840 PSD W30L120 OC	Yes
36052200	RC132V G4 LED34S/830 PSD W30L120 OC	Yes
36056000	RC132V G4LED34_43S/830_840 PSUW30L120 OC	No

General Information (1/2)

Order Code	Full Product Name	Beam angle of light	Protection class IEC	ENEC mark	Flammability mark
		source	class IEC	mark	mark
40133700	RC132V LED36S/840 W60L60 ELB3 IA1 NOC	120 °	Safety class I	-	F
96705500	RC132V G4 LED36S/840 W60L60 NOC IA1	- °	Safety class II	ENEC mark	NO
96706200	RC132V G4 LED34S/830 W60L60 NOC IA1	- °	Safety class II	ENEC mark	NO
96707900	RC132V G4 LED36S/840 W60L60 OC IA1 ELB3	- °	Safety class II	ENEC mark	NO
96708600	RC132V G4 LED36S/840 W60L60 OC IA1	- °	Safety class II	ENEC mark	NO
96709300	RC132V G4 LED34S/830 W60L60 OC IA1	- °	Safety class II	ENEC mark	NO
96710900	RC132V G4 LED36S/840 PSD W60L60 OC ELB3	- °	Safety class II	ENEC mark	NO

Order Code	Full Product Name	Beam angle of light	Protection class IEC	ENEC mark	Flammability mark
		source	class IEC	mark	mark
96711600	RC132V G4 LED36S/840 PSU W60L60 OC ELB3	- °	Safety class II	ENEC mark	NO
96719200	RC132V G4 LED43S/840 PSD W60L60 OC ELB3	- °	Safety class II	ENEC mark	NO
96720800	RC132V G4 LED43S/840 W60L60 OC IA1	- °	Safety class II	ENEC mark	NO
96722200	RC132V G4 LED36/840 PSU W60L60 OC TP(a)E	- °	Safety class II	ENEC mark	NO
36035500	RC132V G4 LED36S/840 PSU W60L60 NOC	- °	Safety class II	ENEC mark	NO
36036200	RC132V G4 LED34S/830 PSU W60L60 NOC	- °	Safety class II	ENEC mark	NO

CoreLine Panel

Order Code	Full Product Name	Beam angle of			
		light source	Protection class IEC	ENEC mark	Flammability mark
36037900	RC132V G4 LED43S/840 PSU W60L60 NOC	- °	Safety class II	ENEC mark	NO
36041600	RC132V G4 LED36S/840 PSU W60L60 OC	- °	Safety class II	ENEC mark	NO
36042300	RC132V G4 LED34S/830 PSU W60L60 OC	- °	Safety class II	ENEC mark	NO
36045400	RC132V G4 LED36S/840 PSD W60L60 OC	- °	Safety class II	ENEC mark	NO
36046100	RC132V G4 LED34S/830 PSD W60L60 OC	- °	Safety class II	ENEC mark	NO
36047800	RC132V G4 LED43S/840 PSD W60L60 OC	- °	Safety class II	ENEC mark	NO
36053900	RC132V G4 LED36/840 PSU W60L60 OC TP(a)	- °	Safety class II	ENEC mark	NO
36054600	RC132V G4 LED34_43S/ 830_840 PSU W60L60 OC	- °	Safety class II	ENEC mark	NO
40134400	RC132V LED36S/840 W30L120 ELB3 IA1 NOC	120 °	Safety class I	-	F
96712300	RC132V G4 LED36S/840 W30L120 NOC IA1	- °	Safety class II	ENEC mark	NO

Order Code	Full Product Name	Beam angle of			
		light source	Protection class IEC	ENEC mark	Flammability mark
96713000	RC132V G4 LED36S/840 W30L120 OC IA1	- °	Safety class II	ENEC mark	NO
96714700	RC132V G4 LED36S/840 PSU W30L120 OC ELB3	- °	Safety class II	ENEC mark	NO
96715400	RC132V G4 LED36S/840 PSD W30L120 OC ELB3	- °	Safety class II	ENEC mark	NO
36040900	RC132V G4 LED36S/840 PSU W30L120 NOC	- °	Safety class II	ENEC mark	NO
36044700	RC132V G4 LED36S/840 PSU W30L120 OC	- °	Safety class II	ENEC mark	NO
36051500	RC132V G4 LED36S/840 PSD W30L120 OC	- °	Safety class II	ENEC mark	NO
36052200	RC132V G4 LED34S/830 PSD W30L120 OC	- °	Safety class II	ENEC mark	NO
36056000	RC132V G4 LED34_43S/ 830_840 PSU W30L120 OC	- °	Safety class II	ENEC mark	NO

General Information (2/2)

Order Code	Full Product Name	Glow-wire test	Product	
			Optic type	family code
40133700	RC132V LED36S/840 W60L60 ELB3 IA1 NOC	Temperature 650 °C, duration 30 s	No	RC132V
96705500	RC132V G4 LED36S/840 W60L60 NOC IA1	Temperature 650 °C, duration 30 s	90	RC132V
96706200	RC132V G4 LED34S/830 W60L60 NOC IA1	Temperature 650 °C, duration 30 s	90	RC132V
96707900	RC132V G4 LED36S/840 W60L60 OC IA1 ELB3	Temperature 650 °C, duration 30 s	90	RC132V
96708600	RC132V G4 LED36S/840 W60L60 OC IA1	Temperature 650 °C, duration 30 s	90	RC132V
96709300	RC132V G4 LED34S/830 W60L60 OC IA1	Temperature 650 °C, duration 30 s	90	RC132V
96710900	RC132V G4 LED36S/840 PSD W60L60 OC ELB3	Temperature 850 °C, duration 30 s	90	RC132V

Order Code	Full Product Name	Glow-wire test	Product	
			Optic type	family code
96711600	RC132V G4 LED36S/840 PSU W60L60 OC ELB3	Temperature 850 °C, duration 30 s	90	RC132V
96719200	RC132V G4 LED43S/840 PSD W60L60 OC ELB3	Temperature 850 °C, duration 30 s	90	RC132V
96720800	RC132V G4 LED43S/840 W60L60 OC IA1	Temperature 650 °C, duration 30 s	90	RC132V
96722200	RC132V G4 LED36/840 PSU W60L60 OC TP(a)E	Temperature 960 °C, duration 5 s	90	RC132V
36035500	RC132V G4 LED36S/840 PSU W60L60 NOC	Temperature 650 °C, duration 30 s	120	-
36036200	RC132V G4 LED34S/830 PSU W60L60 NOC	Temperature 650 °C, duration 30 s	120	-
36037900	RC132V G4 LED43S/840 PSU W60L60 NOC	Temperature 650 °C, duration 30 s	120	-

CoreLine Panel

Order Code	Full Product Name	Glow-wire test	Optic type	Product family code
36041600	RC132V G4 LED36S/840 PSU W60L60 OC	Temperature 650 °C, duration 30 s	90	-
36042300	RC132V G4 LED34S/830 PSU W60L60 OC	Temperature 650 °C, duration 30 s	90	-
36045400	RC132V G4 LED36S/840 PSD W60L60 OC	Temperature 650 °C, duration 30 s	90	-
36046100	RC132V G4 LED34S/830 PSD W60L60 OC	Temperature 650 °C, duration 30 s	90	-
36047800	RC132V G4 LED43S/840 PSD W60L60 OC	Temperature 650 °C, duration 30 s	90	-
36053900	RC132V G4 LED36/840 PSU W60L60 OC TP(a)	Temperature 960 °C, duration 5 s	90	-
36054600	RC132V G4LED34_43S/830_840 PSU W60L60 OC	Temperature 650 °C, duration 30 s	90	-
40134400	RC132V LED36S/840 W30L120 ELB3 IA1 NOC	Temperature 650 °C, duration 30 s	No	-
96712300	RC132V G4 LED36S/840 W30L120 NOC IA1	Temperature 650 °C, duration 30 s	90	RC132V

Order Code	Full Product Name	Glow-wire test	Optic type	Product family code
96713000	RC132V G4 LED36S/840 W30L120 OC IA1	Temperature 650 °C, duration 30 s	90	RC132V
96714700	RC132V G4 LED36S/840 PSU W30L120 OC ELB3	Temperature 850 °C, duration 30 s	90	RC132V
96715400	RC132V G4 LED36S/840 PSD W30L120 OC ELB3	Temperature 850 °C, duration 30 s	90	RC132V
36040900	RC132V G4 LED36S/840 PSU W30L120 NOC	Temperature 650 °C, duration 30 s	120	-
36044700	RC132V G4 LED36S/840 PSU W30L120 OC	Temperature 650 °C, duration 30 s	90	-
36051500	RC132V G4 LED36S/840 PSD W30L120 OC	Temperature 650 °C, duration 30 s	90	-
36052200	RC132V G4 LED34S/830 PSD W30L120 OC	Temperature 650 °C, duration 30 s	90	-
36056000	RC132V G4LED34_43S/830_840 PSUW30L120 OC	Temperature 650 °C, duration 30 s	90	-

Initial Performance (IEC Compliant) (1/2)

Order Code	Full Product Name	Initial chromaticity	Init. Corr. Temperature	Init. Colour rendering index	Initial LED luminaire efficacy
40133700	RC132V LED36S/840 W60L60 ELB3 IA1 NOC	(0.38, 0.38) SDCM <3	4000 K	≥80	100 lm/W
96705500	RC132V G4 LED36S/840 W60L60 NOC IA1	(0.38, 0.38) SDCM <3	4000 K	>80	123 lm/W
96706200	RC132V G4 LED34S/830 W60L60 NOC IA1	(0.38, 0.38) SDCM <3	3000 K	>80	117 lm/W
96707900	RC132V G4 LED36S/840 W60L60 OC IA1 ELB3	(0.38, 0.38) SDCM <3	4000 K	>80	123 lm/W
96708600	RC132V G4 LED36S/840 W60L60 OC IA1	(0.38, 0.38) SDCM <3	4000 K	>80	123 lm/W
96709300	RC132V G4 LED34S/830 W60L60 OC IA1	(0.38, 0.38) SDCM <3	3000 K	>80	117 lm/W
96710900	RC132V G4 LED36S/840 PSD W60L60 OC ELB3	(0.38, 0.38) SDCM <3	4000 K	>80	123 lm/W

Order Code	Full Product Name	Initial chromaticity	Init. Corr. Temperature	Init. Colour rendering index	Initial LED luminaire efficacy
96711600	RC132V G4 LED36S/840 PSU W60L60 OC ELB3	(0.38, 0.38) SDCM <3	4000 K	>80	123 lm/W
96719200	RC132V G4 LED43S/840 PSD W60L60 OC ELB3	(0.38, 0.38) SDCM <3	4000 K	>80	125 lm/W
96720800	RC132V G4 LED43S/840 W60L60 OC IA1	(0.38, 0.38) SDCM <3	4000 K	>80	125 lm/W
96722200	RC132V G4 LED36/840 PSU W60L60 OC TP(a)E	(0.38, 0.38) SDCM <3	4000 K	>80	123 lm/W
36035500	RC132V G4 LED36S/840 PSU W60L60 NOC	(0.38, 0.38) SDCM ≤3	4000 K	>80	123 lm/W
36036200	RC132V G4 LED34S/830 PSU W60L60 NOC	(0.44, 0.41) SDCM ≤3	3000 K	>80	117 lm/W
36037900	RC132V G4 LED43S/840 PSU W60L60 NOC	(0.39, 0.39) SDCM ≤3	4000 K	>80	125 lm/W
36041600	RC132V G4 LED36S/840 PSU W60L60 OC	(0.38, 0.38) SDCM ≤3	4000 K	>80	123 lm/W

CoreLine Panel

Order Code	Full Product Name	Initial chromaticity	Init. Corr. Colour Temperature	Init. Colour rendering index	Initial LED luminaire efficacy
36042300	RC132V G4 LED34S/830 PSU W60L60 OC	(0.44, 0.41) SDCM ≤3	3000 K	>80	117 lm/W
36045400	RC132V G4 LED36S/840 PSD W60L60 OC	(0.38, 0.38) SDCM ≤3	4000 K	>80	123 lm/W
36046100	RC132V G4 LED34S/830 PSD W60L60 OC	(0.44, 0.41) SDCM ≤3	3000 K	>80	117 lm/W
36047800	RC132V G4 LED43S/840 PSD W60L60 OC	(0.39, 0.39) SDCM ≤3	4000 K	>80	125 lm/W
36053900	RC132V G4 LED36/840 PSU W60L60 OC TP(a)	(0.38, 0.38) SDCM ≤3	4000 K	>80	123 lm/W
36054600	RC132V G4LED34_43S/ 830_840 PSU W60L60 OC	(0.39, 0.39) SDCM ≤3	3000, 4000 K	>80	125 lm/W
40134400	RC132V LED36S/840 W30L120 ELB3 IA1 NOC	(0.38, 0.38) SDCM <3	4000 K	≥80	100 lm/W
96712300	RC132V G4 LED36S/840 W30L120 NOC IA1	(0.38, 0.38) SDCM <3	4000 K	>80	123 lm/W

Order Code	Full Product Name	Initial chromaticity	Init. Corr. Colour Temperature	Init. Colour rendering index	Initial LED luminaire efficacy
96713000	RC132V G4 LED36S/840 W30L120 OC IA1	(0.38, 0.38) SDCM <3	4000 K	>80	123 lm/W
96714700	RC132V G4 LED36S/840 PSU W30L120 OC ELB3	(0.38, 0.38) SDCM <3	4000 K	>80	123 lm/W
96715400	RC132V G4 LED36S/840 PSD W30L120 OC ELB3	(0.38, 0.38) SDCM <3	4000 K	>80	123 lm/W
36040900	RC132V G4 LED36S/840 PSU W30L120 NOC	(0.38, 0.38) SDCM ≤3	4000 K	>80	123 lm/W
36044700	RC132V G4 LED36S/840 PSU W30L120 OC	(0.38, 0.38) SDCM ≤3	4000 K	>80	123 lm/W
36051500	RC132V G4 LED36S/840 PSD W30L120 OC	(0.38, 0.38) SDCM ≤3	4000 K	>80	123 lm/W
36052200	RC132V G4 LED34S/830 PSD W30L120 OC	(0.44, 0.41) SDCM ≤3	3000 K	>80	117 lm/W
36056000	RC132V G4LED34_43S/ 830_840 PSUW30L120 OC	(0.39, 0.39) SDCM ≤3	3000, 4000 K	>80	125 lm/W

Initial Performance (IEC Compliant) (2/2)

Order Code	Full Product Name	Initial luminous flux	Initial input power
40133700	RC132V LED36S/840 W60L60 ELB3 IA1 NOC	3600 lm	36 W
96705500	RC132V G4 LED36S/840 W60L60 NOC IA1	3600 lm	29 W
96706200	RC132V G4 LED34S/830 W60L60 NOC IA1	3400 lm	29 W
96707900	RC132V G4 LED36S/840 W60L60 OC IA1 ELB3	3600 lm	33 W
96708600	RC132V G4 LED36S/840 W60L60 OC IA1	3600 lm	29 W
96709300	RC132V G4 LED34S/830 W60L60 OC IA1	3400 lm	29 W
96710900	RC132V G4 LED36S/840 PSD W60L60 OC ELB3	3600 lm	33 W
96711600	RC132V G4 LED36S/840 PSU W60L60 OC ELB3	3600 lm	33 W
96719200	RC132V G4 LED43S/840 PSD W60L60 OC ELB3	4300 lm	37 W
96720800	RC132V G4 LED43S/840 W60L60 OC IA1	4300 lm	34.5 W

Order Code	Full Product Name	Initial luminous flux	Initial input power
96722200	RC132V G4 LED36/840 PSU W60L60 OC TP(a)E	3600 lm	29 W
36035500	RC132V G4 LED36S/840 PSU W60L60 NOC	3600 lm	29 W
36036200	RC132V G4 LED34S/830 PSU W60L60 NOC	3400 lm	29 W
36037900	RC132V G4 LED43S/840 PSU W60L60 NOC	4300 lm	34.5 W
36041600	RC132V G4 LED36S/840 PSU W60L60 OC	3600 lm	29 W
36042300	RC132V G4 LED34S/830 PSU W60L60 OC	3400 lm	29 W
36045400	RC132V G4 LED36S/840 PSD W60L60 OC	3600 lm	29 W
36046100	RC132V G4 LED34S/830 PSD W60L60 OC	3400 lm	29 W
36047800	RC132V G4 LED43S/840 PSD W60L60 OC	4300 lm	34.5 W

CoreLine Panel

Order Code	Full Product Name	Initial luminous flux	Initial input power
36053900	RC132V G4 LED36/840 PSU W60L60 OC TP(a)	3600 lm	29 W
36054600	RC132V G4LED34_43S/830_840 PSU W60L60 OC	4300 lm	30, 35 W
40134400	RC132V LED36S/840 W30L120 ELB3 IA1 NOC	3600 lm	36 W
96712300	RC132V G4 LED36S/840 W30L120 NOC IA1	3600 lm	29 W
96713000	RC132V G4 LED36S/840 W30L120 OC IA1	3600 lm	29 W
96714700	RC132V G4 LED36S/840 PSU W30L120 OC ELB3	3600 lm	33 W
96715400	RC132V G4 LED36S/840 PSD W30L120 OC ELB3	3600 lm	33 W

Order Code	Full Product Name	Initial luminous flux	Initial input power
36040900	RC132V G4 LED36S/840 PSU W30L120 NOC	3600 lm	29 W
36044700	RC132V G4 LED36S/840 PSU W30L120 OC	3600 lm	29 W
36051500	RC132V G4 LED36S/840 PSD W30L120 OC	3600 lm	29 W
36052200	RC132V G4 LED34S/830 PSD W30L120 OC	3400 lm	29 W
36056000	RC132V G4LED34_43S/830_840 PSUW30L120 OC	4300 lm	30, 35 W

