



MasterConnect LEDtube EM/mains T8



MasterConnect LEDtube IA 1200mm UO 16W840 T8

Introducing MasterConnect LED lamps – smart retrofit LED lamps that give you an easy and seamless way to upgrade to connected lighting. Simply set up with an intuitive app, MasterConnect LED lamps can be programmed to maximise energy savings, while providing wireless and automated light for your comfort and convenience. What's more, it is fully scalable and upgradable. If you want to enjoy further benefits, such as remote control or management dashboard, you can simply keep the currently installed lamps and add a gateway to experience all the advantages of a cloud-based system. There's no better way to take lighting solutions to the next level.

Product data

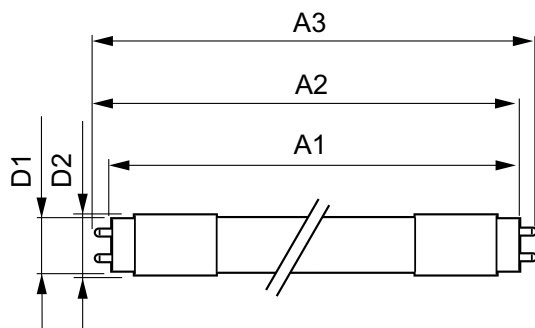
General Information		Operating and Electrical	
Cap base	G13 [Medium Bi-Pin Fluorescent]	Luminous efficacy (rated) (nom.)	156.00 lm/W
EU RoHS compliant	Yes	Colour consistency	<6
Nominal lifetime (nom.)	60000 h	Colour rendering index (nom.)	83
Switching cycle	200,000X	LLMF at end of nominal lifetime (nom.)	70 %
Technical type	16-36W	Input frequency	50 to 60 Hz
	Sphere	Power (Rated) (Nom)	16 W
		Lamp current (max.)	76 mA
		Lamp current (min.)	69 mA
		Starting time (nom.)	0.5 s
		Warm-up time to 60% light (nom.)	0.5 s
		Power factor (nom.)	0.9
Light Technical			
Colour Code	840 [CCT of 4,000 K]		
Beam Angle (Nom)	160 °		
Luminous flux (nom.)	2500 lm		
Colour designation	Cool White (CW)		
Correlated Colour Temperature (Nom)	4000 K		

MasterConnect LEDtube EM/mains T8

Voltage (Nom)	220-240 V
Temperature	
T-ambient (max.)	45 °C
T-ambient (min.)	-20 °C
T storage (max.)	65 °C
T storage (min.)	-40 °C
T-Case maximum (nom.)	50 °C
Mechanical and Housing	
Product length	1200 mm
Bulb shape	Tube, double-ended
Approval and Application	
Energy Efficiency Class	D
Energy-saving product	Yes
Approval marks	RoHS compliance CE marking KEMA Keur certificate

Energy consumption kWh/1,000 hours	16 kWh
	406200
Product Data	
Full product code	871869966970600
Order product name	MasterConnect LEDtube IA 1200mm UO 16W840 T8
EAN/UPC – product	8718699669706
Order code	66970600
SAP numerator – quantity per pack	1
Numerator – packs per outer box	10
SAP material	929002210402
SAP net weight (piece)	0.320 kg

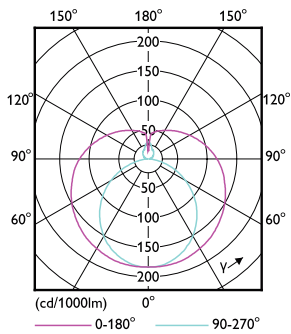
Dimensional drawing



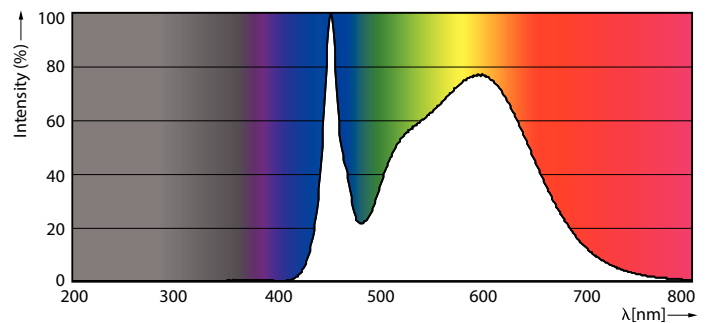
TLED 4ft 230V 16.5-32W 2500lm 4000K G13

Product	D1	D2	A1	A2	A3
MasterConnect LEDtube IA 1200mm UO 16W840 T8	25.8 mm	28 mm	1198.2 mm	1205.3 mm	1212.4 mm

Photometric data



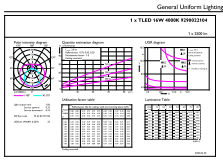
MC LEDtube 16W G13 2500lm



MC LEDtube G13 840

MasterConnect LEDtube EM/mains T8

Photometric data



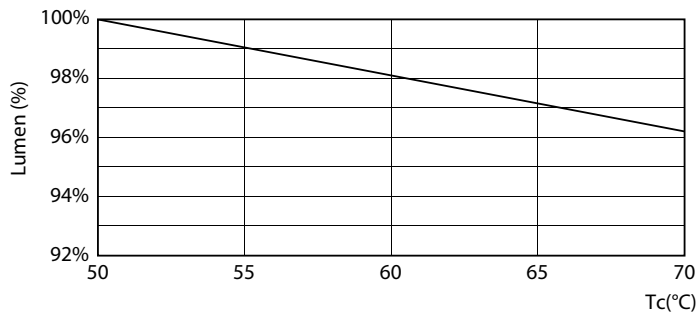
© 2021 Philips Lighting B.V. Page 10

MC LEDtube 16W G13 2500lm 840

Lifetime



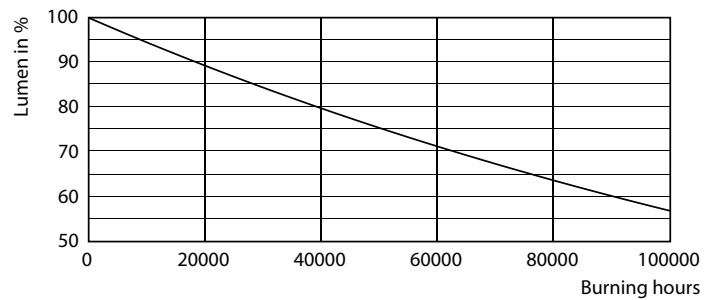
LEDtube_60K_FailureRate



MC LEDtube 16W 60K LumenVsTc



LEDtube_60K_LifetimeVsTc



LEDtube_60K

MasterConnect LEDtube EM/mains T8

Lifetime



LEDtube_60K

