



MASTER LEDtube InstantFit HF T5



Master LEDtube HF 600mm HE 8W 865 T5

The Philips MASTER LEDtube integrates an LED light source into a traditional fluorescent form factor. Its unique design creates a perfectly uniform visual appearance, which cannot be distinguished from traditional fluorescents. These T5 lighting tubes are the right choice for absolute performance and are designed to stand up to everyday conditions. Unparalleled savings, thanks to low energy consumption and an exceptionally long lifetime, make these T5 LED tubes the choice for every demanding applications.

Product data

General Information	
Cap base	G5 [G5]
EU RoHS compliant	Yes
Nominal lifetime (nom.)	60000 h
Switching cycle	50,000X
	Sphere

Light Technical	
Colour Code	865 [CCT of 6,500 K]
Beam Angle (Nom)	200 °
Luminous flux (nom.)	1050 lm
Colour designation	Cool Daylight
Correlated Colour Temperature (Nom)	6500 K
Luminous efficacy (rated) (nom.)	131.00 lm/W
Colour consistency	<6
Colour rendering index (nom.)	80
LLMF at end of nominal lifetime (nom.)	70 %

Operating and Electrical	
Input frequency	30K to 100K Hz
Power (Rated) (Nom)	8 W
Lamp current (max.)	350 mA
Lamp current (min.)	150 mA
Starting time (nom.)	0.5 s
Warm-up time to 60% light (nom.)	0.5 s
Power factor (nom.)	0.92
Voltage (Nom)	40-70 V

Temperature	
T-ambient (max.)	45 °C
T-ambient (min.)	-20 °C
T storage (max.)	65 °C
T storage (min.)	-40 °C
T-Case maximum (nom.)	65 °C

MASTER LEDtube InstantFit HF T5

Controls and Dimming

Dimmable	Yes – Check ballast compatibility
----------	-----------------------------------

Mechanical and Housing

Lamp Finish	Frosted
Bulb material	Glass
Product length	600 mm
Bulb shape	Tube, double-ended

Approval and Application

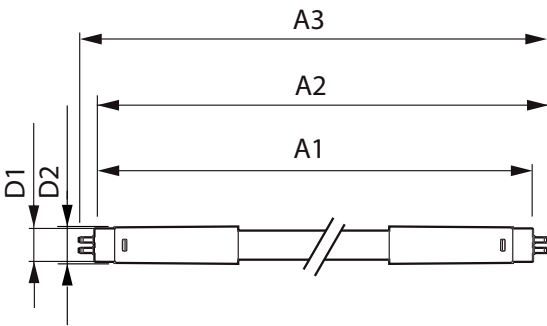
Energy Efficiency Class	E
Energy-saving product	Yes
Approval marks	RoHS compliance TUV CE marking KEMA Keur certificate

Energy consumption kWh/1,000 hours	8 kWh
	406185

Product Data

Full product code	871869674327000
Order product name	Master LEDtube HF 600mm HE 8W 865 T5
EAN/UPC – product	8718696743270
Order code	74327000
SAP numerator – quantity per pack	1
Numerator – packs per outer box	10
SAP material	929001390902
SAP net weight (piece)	0.080 kg

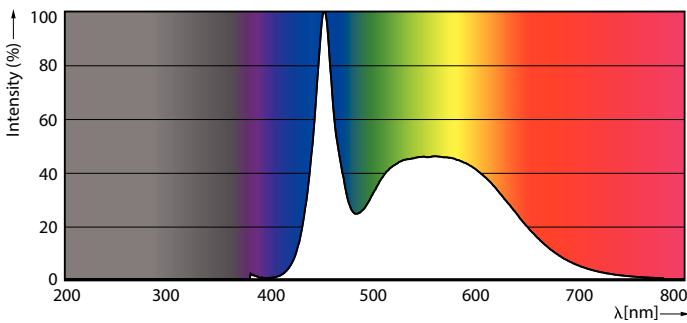
Dimensional drawing



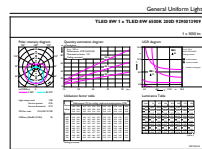
Master LEDtube HF 600mm HE 8W 865 T5

Product	D1	D2	A1	A2	A3
Master LEDtube HF 600mm HE 8W 865 T5	15.5 mm	18.8 mm	549 mm	556.1 mm	563.2 mm

Photometric data



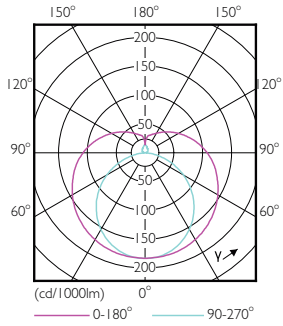
LEDtubes, TLED T12 120-277V 20W 6500K G13



LEDtube 600mm 8W G5 865 1050lm

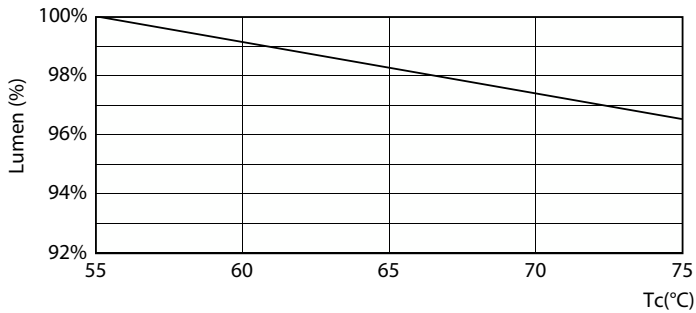
MASTER LEDtube InstantFit HF T5

Photometric data

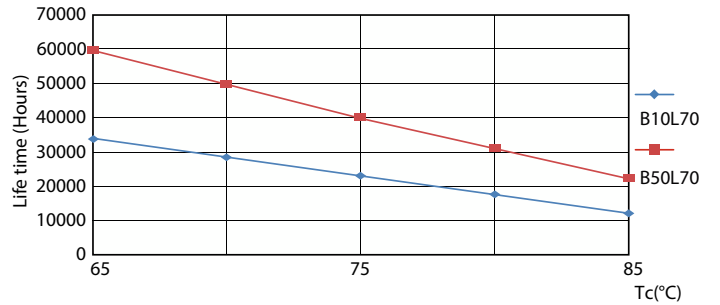


LEDtube 600mm 8W G5 830 1000lm

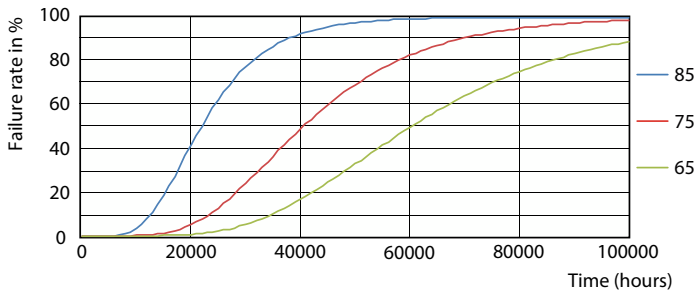
Lifetime



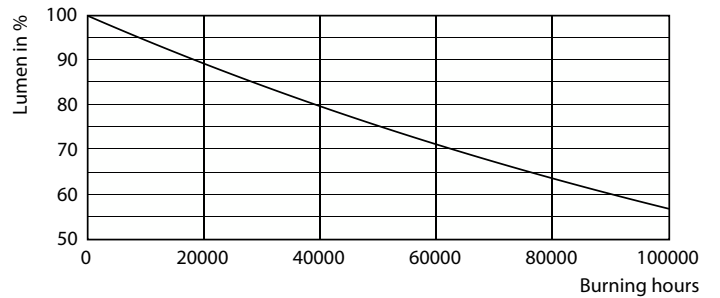
LumenVsTc



LifetimeVsTc



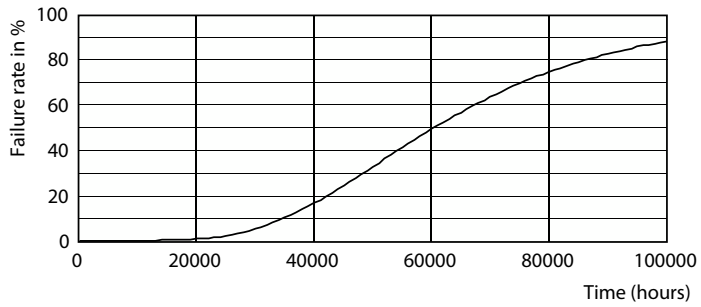
FailureRate



Lumen Maintenance Diagram

MASTER LEDtube InstantFit HF T5

Lifetime



Life Expectancy Diagram

