



# UniFlood C

## BVP324 54LED 27K 220V 30 D2

6500 lm - 110 W - 2700 K

UniFlood C is a circular-shaped, exterior-rated and cost-effective architectural LED floodlight that is designed for façade, landscape and outdoor flood lighting applications. The robust mechanical design and high-efficiency optical design make it ideal for illuminating multi-storey exterior facades, bridges, landmarks and monuments. Six different spread lenses, ranging from narrow spot to wide flood, and a DMX512/RDM control option available to give architects and designers the freedom to explore a wide range of concepts and design with no limitations.

### Warnings and Safety

- For outdoor use only

### Product data

General Information	
Light source colour	Warm white
Driver included	Yes
Optical cover/lens type	GT [ Tempered glass]
Control interface	-
Connection	Flying leads/cables
Cable	Cable 0.5 m without plug 3-pole
Protection class IEC	Safety class I
Flammability mark	F [ For mounting on normally flammable surfaces]
CE mark	CE mark

### Operating and Electrical

Input Voltage	220 to 240 V
Input frequency	50 to 60 Hz
Inrush current	65 A

Power factor (min.)	0.9
---------------------	-----

### Controls and Dimming

Dimmable	No
----------	----

### Mechanical and Housing

Housing material	Aluminium die-cast
Optical cover/lens material	Polymethyl methacrylate
Effective projected area	0.086 m <sup>2</sup>
Colour	Dark Grey

### Approval and Application

Ingress protection code	IP66 [ Dust penetration-protected, jet-proof]
Mech. impact protection code	IK08 [ 5 J vandal-protected]

# UniFlood C

## Initial Performance (IEC Compliant)

Initial luminous flux (system flux)	6500 lm
Luminous flux tolerance	+/-10%
Initial LED luminaire efficacy	59 lm/W
Init. Corr. Colour Temperature	2700 K
Init. Colour rendering index	80
Initial chromaticity	SDCM = 4
Initial input power	110 W
Power consumption tolerance	+/-10%

## Application Conditions

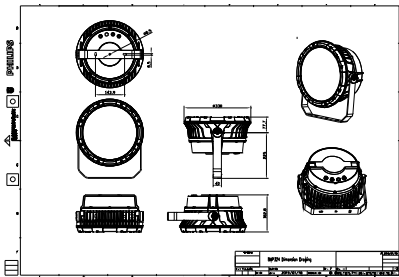
Ambient temperature range	-40 to +50 °C
---------------------------	---------------

## Product Data

Full product code	871951453960000
Order product name	BVP324 54LED 27K 220V 30 D2
EAN/UPC – product	8719514539600
Order code	53960000
SAP numerator – quantity per pack	1
Numerator – packs per outer box	1
SAP material	911401731933
SAP net weight (piece)	10.399 kg



## Dimensional drawing



## Floodlight surface LED

