



# UniFlood C

## BVP322 18LED RGB 220V 45 DMX D2

1345 lm - 36 W - - K

UniFlood C is a circular-shaped, exterior-rated and cost-effective architectural LED floodlight that is designed for façade, landscape and outdoor flood lighting applications. The robust mechanical design and high-efficiency optical design make it ideal for illuminating multi-storey exterior facades, bridges, landmarks and monuments. Six different spread lenses, ranging from narrow spot to wide flood, and a DMX512/RDM control option available to give architects and designers the freedom to explore a wide range of concepts and design with no limitations.

### Warnings and Safety

- For outdoor use only

### Product data

General Information	
Light source colour	Red, green and blue
Driver included	Yes
Optical cover/lens type	GT [ Tempered glass]
Control interface	Dynamic DMX/RDM
Connection	Flying leads/wires and 2 push-in connectors 4-pole
Cable	Cable 0.5 m without plug 3-pole and 2 cables 0.5 m with connector 4-pole
Protection class IEC	Safety class I
Flammability mark	F [ For mounting on normally flammable surfaces]
CE mark	CE mark
Operating and Electrical	
Input Voltage	220 to 240 V
Input frequency	50 to 60 Hz
Inrush current	40 A
Power factor (min.)	0.9
Controls and Dimming	
Dimmable	Yes
Mechanical and Housing	
Housing material	Aluminium die-cast
Optical cover/lens material	Polymethyl methacrylate
Effective projected area	0.038 m <sup>2</sup>
Colour	Dark Grey
Approval and Application	
Ingress protection code	IP66 [ Dust penetration-protected, jet-proof]

# UniFlood C

Mech. impact protection code IK08 [ 5 J vandal-protected]

## Initial Performance (IEC Compliant)

Initial luminous flux (system flux)	1345 lm
Luminous flux tolerance	+/-10%
Initial LED luminaire efficacy	37 lm/W
Init. Corr. Colour Temperature	- K
Init. Colour rendering index	-
Initial input power	36 W
Power consumption tolerance	+/-10%

## Application Conditions

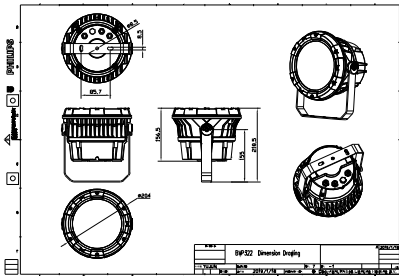
Ambient temperature range -40 to +50 °C

## Product Data

Full product code	871951453887099
Order product name	BVP322 18LED RGB 220V 45 DMX D2
EAN/UPC – product	8719514538870
Order code	53887099
SAP numerator – quantity per pack	1
Numerator – packs per outer box	2
SAP material	911401731203
SAP net weight (piece)	4.099 kg



## Dimensional drawing



## Floodlight surface LED

