



UniFlood C

BVP321 9LED 40K 220V 45 D2

1140 lm - 21 W - - K

UniFlood C is a circular-shaped, exterior-rated and cost-effective architectural LED floodlight that is designed for façade, landscape and outdoor flood lighting applications. The robust mechanical design and high-efficiency optical design make it ideal for illuminating multi-storey exterior facades, bridges, landmarks and monuments. Six different spread lenses, ranging from narrow spot to wide flood, and a DMX512/RDM control option available to give architects and designers the freedom to explore a wide range of concepts and design with no limitations.

Warnings and Safety

- For outdoor use only

Product data

| General Information | | Power factor (min.) | | 0.9 | |
|-------------------------|--|---------------------------------|---|-----|--|
| Light source colour | Neutral white | | | | |
| Driver included | Yes | | | | |
| Optical cover/lens type | GT [Tempered glass] | | | | |
| Control interface | - | | | | |
| Connection | Flying leads/cables | | | | |
| Cable | Cable 0.5 m without plug 3-pole | | | | |
| Protection class IEC | Safety class I | | | | |
| Flammability mark | F [For mounting on normally flammable surfaces] | | | | |
| CE mark | CE mark | | | | |
| | | Controls and Dimming | | | |
| | | Dimmable | No | | |
| | | Mechanical and Housing | | | |
| | | Housing material | Aluminium die-cast | | |
| | | Optical cover/lens material | Polymethyl methacrylate | | |
| | | Effective projected area | 0.03 m ² | | |
| | | Colour | Dark Grey | | |
| | | Approval and Application | | | |
| | | Ingress protection code | IP66 [Dust penetration-protected, jet-proof] | | |
| | | Mech. impact protection code | IK08 [5 J vandal-protected] | | |

UniFlood C

Initial Performance (IEC Compliant)

| | |
|-------------------------------------|---------|
| Initial luminous flux (system flux) | 1140 lm |
| Luminous flux tolerance | +/-10% |
| Initial LED luminaire efficacy | 54 lm/W |
| Init. Corr. Colour Temperature | - K |
| Init. Colour rendering index | 80 |
| Initial chromaticity | 4 SDCM |
| Initial input power | 21 W |
| Power consumption tolerance | +/-10% |

Application Conditions

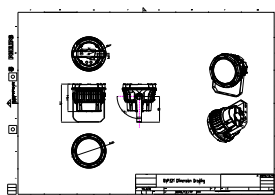
| | |
|---------------------------|---------------|
| Ambient temperature range | -40 to +50 °C |
|---------------------------|---------------|

Product Data

| | |
|-----------------------------------|----------------------------|
| Full product code | 871951453801699 |
| Order product name | BVP321 9LED 40K 220V 45 D2 |
| EAN/UPC – product | 8719514538016 |
| Order code | 53801699 |
| SAP numerator – quantity per pack | 1 |
| Numerator – packs per outer box | 6 |
| SAP material | 911401730343 |
| SAP net weight (piece) | 2.366 kg |



Dimensional drawing



Floodlight surface LED

