



UniFlood C

BVP321 9LED 40K 220V 15 D2

1310 lm - 21 W - - K

UniFlood C is a circular-shaped, exterior-rated and cost-effective architectural LED floodlight that is designed for façade, landscape and outdoor flood lighting applications. The robust mechanical design and high-efficiency optical design make it ideal for illuminating multi-storey exterior facades, bridges, landmarks and monuments. Six different spread lenses, ranging from narrow spot to wide flood, and a DMX512/RDM control option available to give architects and designers the freedom to explore a wide range of concepts and design with no limitations.

Warnings and Safety

- For outdoor use only

Product data

General Information	
Light source colour	Neutral white
Driver included	Yes
Optical cover/lens type	GT [Tempered glass]
Control interface	-
Connection	Flying leads/cables
Cable	Cable 0.5 m without plug 3-pole
Protection class IEC	Safety class I
Flammability mark	F [For mounting on normally flammable surfaces]
CE mark	CE mark
Power factor (min.) 0.9	
Controls and Dimming	
Dimmable	No
Mechanical and Housing	
Housing material	Aluminium die-cast
Optical cover/lens material	Polymethyl methacrylate
Effective projected area	0.03 m ²
Colour	Dark Grey
Approval and Application	
Ingress protection code	IP66 [Dust penetration-protected, jet-proof]
Mech. impact protection code	IK08 [5 J vandal-protected]

UniFlood C

Initial Performance (IEC Compliant)

Initial luminous flux (system flux)	1310 lm
Luminous flux tolerance	+/-10%
Initial LED luminaire efficacy	62 lm/W
Init. Corr. Colour Temperature	- K
Init. Colour rendering index	80
Initial chromaticity	4 SDCM
Initial input power	21 W
Power consumption tolerance	+/-10%

Application Conditions

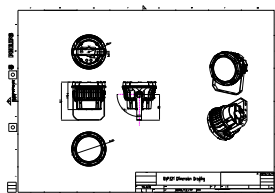
Ambient temperature range	-40 to +50 °C
---------------------------	---------------

Product Data

Full product code	871951453783599
Order product name	BVP321 9LED 40K 220V 15 D2
EAN/UPC – product	8719514537835
Order code	53783599
SAP numerator – quantity per pack	1
Numerator – packs per outer box	6
SAP material	911401730163
SAP net weight (piece)	2.366 kg



Dimensional drawing



Floodlight surface LED

