



MASTER LEDtube InstantFit HF T5



Master LEDtube HF 1500mm HO 26W 830 T5 OE

Philips MASTER LEDtube InstantFit T5 integrates a LED light source into a traditional fluorescent form factor. Its unique design creates a perfectly uniform visual appearance which cannot be distinguished from traditional fluorescents. The Philips MASTER LEDtube InstantFit T5 is the ideal solution for customers who have higher light output requirements and want to maximise value over the lifetime. The full energy savings & longer lifetime result in attractive payback times and TCO benefits.

Product data

General Information	
Cap base	G5 [G5]
EU RoHS compliant	Yes
Nominal lifetime (nom.)	60000 h
Switching cycle	50,000X
Technical type	26-49W
	Sphere

Light Technical	
Colour Code	830 [CCT of 3,000 K]
Beam Angle (Nom)	200 °
Luminous flux (nom.)	3700 lm
Colour designation	White (WH)
Correlated Colour Temperature (Nom)	3000 K
Luminous efficacy (rated) (nom.)	142.00 lm/W
Colour consistency	<6
Colour rendering index (nom.)	80
LLMF at end of nominal lifetime (nom.)	70 %

Operating and Electrical	
Input frequency	20 K to 140 K Hz
Power (Rated) (Nom)	26 W
Lamp current (max.)	420 mA
Lamp current (min.)	150 mA
Starting time (nom.)	0.5 s
Warm-up time to 60% light (nom.)	0.5 s
Power factor (nom.)	0.9
Voltage (Nom)	60-120 V

Temperature	
T-ambient (max.)	45 °C
T-ambient (min.)	-20 °C
T storage (max.)	65 °C
T storage (min.)	-40 °C
T-Case maximum (nom.)	50 °C

MASTER LEDtube InstantFit HF T5

Controls and Dimming

Dimmable Only with specific dimmers

Mechanical and Housing

Lamp Finish Frosted
Bulb material Glass
Product length 1500 mm
Bulb shape Tube, double-ended

Approval and Application

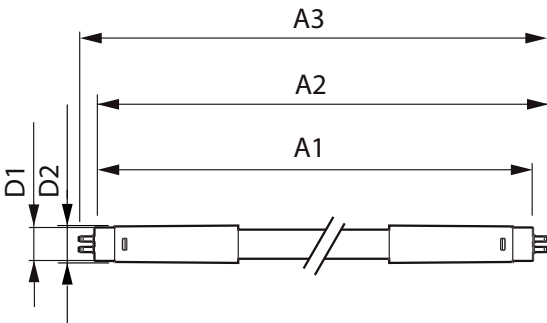
Energy Efficiency Class E
Energy-saving product Yes
Approval marks RoHS compliance CE marking KEMA Keur certificate
Energy consumption kWh/1,000 hours 26 kWh

406212

Product Data

Full product code 871869974957600
Order product name Master LEDtube HF 1500mm HO 26W 830 T5 OE
EAN/UPC – product 8718699749576
Order code 74957600
SAP numerator – quantity per pack 1
Numerator – packs per outer box 10
SAP material 929002352302
SAP net weight (piece) 0.380 kg

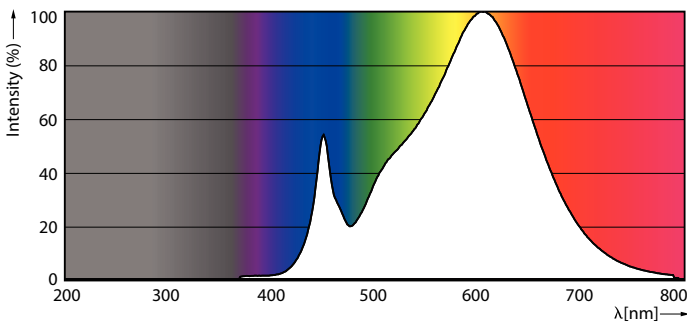
Dimensional drawing



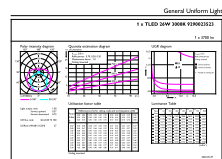
TLED 1500mm HF 26W 3900lm 3000K G5

Product	D1	D2	A1	A2	A3
Master LEDtube HF 1500mm HO 26W 830 T5 OE	15.5 mm	19 mm	1449 mm	1456 mm	1463 mm

Photometric data



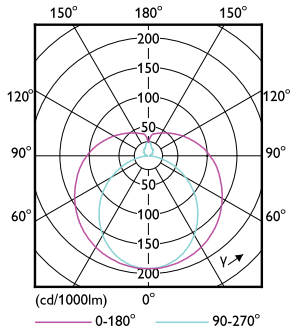
LEDtube MAS 26W G5 3700lm 830



LEDtube MAS 26W G5 3700lm 830 1500mm

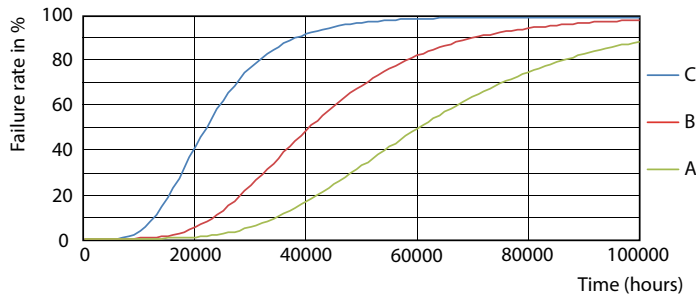
MASTER LEDtube InstantFit HF T5

Photometric data

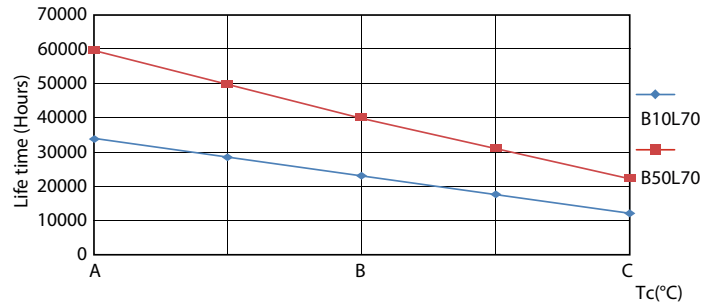


LEDtube MAS 26W G5 3700lm

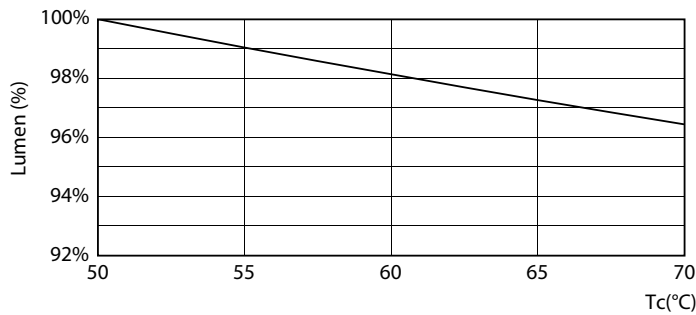
Lifetime



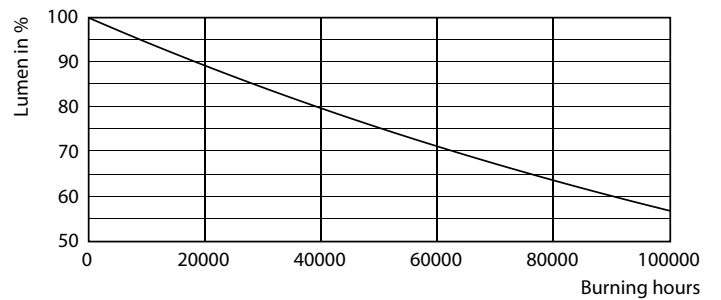
LEDtube_60K_FailureRate



LEDtube_60K_LifetimeVsTc



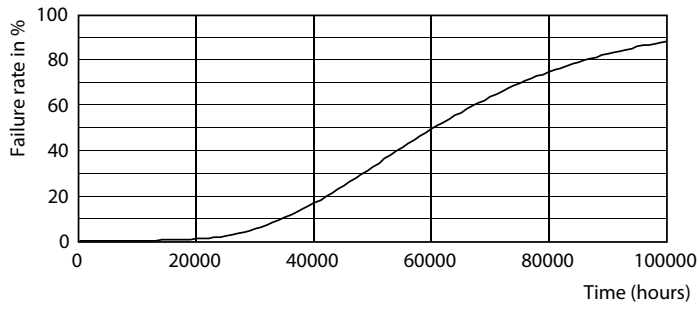
LEDtube 26W 60K LumenVsTc 2



LEDtube_60K

MASTER LEDtube InstantFit HF T5

Lifetime



LEDtube_60K

