



Master Value LEDtube Universal T8

MAS LEDtube VLE UN 1200mm UO 16W865 T8

The new Philips MASTER LEDtube Universal T8 brings ease and simplicity to your lighting project. You don't need to match the driver technology any more: a unique design enables the Philips MASTER LEDtube Universal T8 to directly fit in luminaires operating on either electromagnetic ballasts or HF electronic ballasts or mains power connection. It is so simple to operate and you no longer need to stock two types of tubes! Perfectly safe, reliable and easy to install, the Philips MASTER LEDtube Universal T8 is the ideal alternative to standard fluorescent tubes: to maximise value over lifetime with high energy savings and lower maintenance costs.

Product data

General Information	
Cap base	G13 [Medium Bi-Pin Fluorescent]
EU RoHS compliant	Yes
Nominal lifetime (nom.)	50000 h
Switching cycle	50,000X
Technical type	16-36W

Light Technical	
Colour Code	865 [CCT of 6,500 K]
Beam Angle (Nom)	240 °
Luminous flux (nom.)	2500 lm
Colour designation	Cool Daylight
Correlated Colour Temperature (Nom)	6500 K
Luminous efficacy (rated) (nom.)	156.00 lm/W
Colour consistency	<6
Colour rendering index (nom.)	83

LLMF at end of nominal lifetime (nom.) 70 %	
---	--

Operating and Electrical	
Input frequency	50 to 60 Hz
Power (Rated) (Nom)	16 W
Lamp current (nom.)	75 mA
Starting time (nom.)	0.5 s
Warm-up time to 60% light (nom.)	0.5 s
Power factor (nom.)	0.9
Voltage (Nom)	220-240 V

Temperature	
T-ambient (max.)	45 °C
T-ambient (min.)	-20 °C
T storage (max.)	65 °C
T storage (min.)	-40 °C

Master Value LEDtube Universal T8

T-Case maximum (nom.)	50 °C
-----------------------	-------

Controls and Dimming

Dimmable	No
----------	----

Mechanical and Housing

Lamp Finish	Frosted
Bulb material	Glass
Product length	1200 mm
Bulb shape	Tube, double-ended

Approval and Application

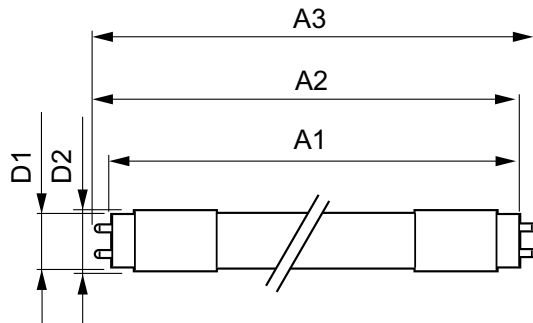
Energy-saving product	Yes
Approval marks	RoHS compliance CE marking KEMA Keur certificate

Energy consumption kWh/1,000 hours	16 kWh
------------------------------------	--------

Product Data

Full product code	871869973921800
Order product name	MAS LEDtube VLE UN 1200mm UO 16W865 T8
EAN/UPC – product	8718699739218
Order code	73921800
SAP numerator – quantity per pack	1
Numerator – packs per outer box	10
SAP material	929002333202
SAP net weight (piece)	0.215 kg

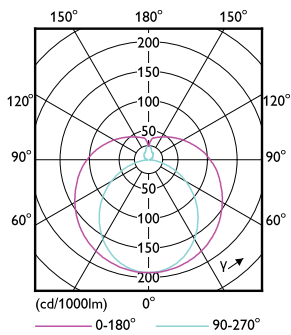
Dimensional drawing



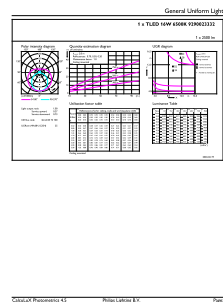
TLED4ft 220-240V 16-36W 2500lm 6500K G13

Product	D1	D2	A1	A2	A3
MAS LEDtube VLE UN 1200mm UO 16W865 T8	25.7 mm	28 mm	1199.4 mm	1205.3 mm	1213.6 mm

Photometric data



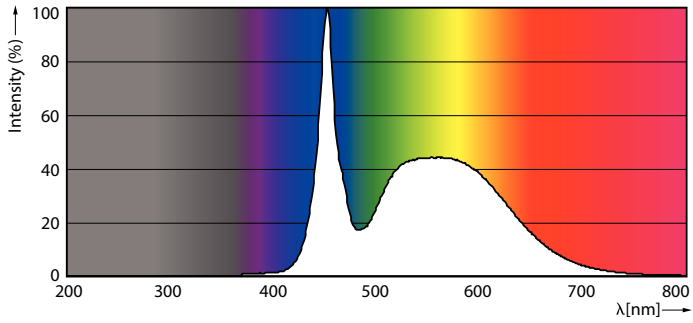
LEDtube T8 G13 MAS



LEDtube 16W G13 2500lm 865

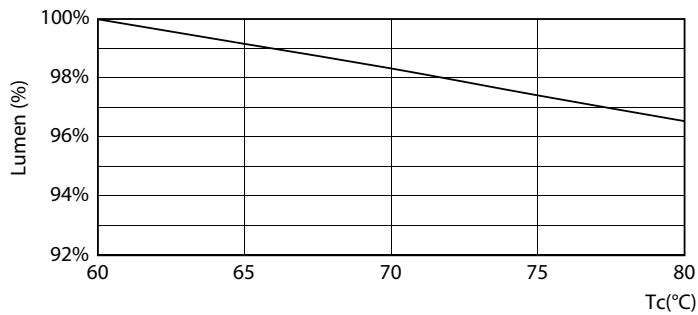
Master Value LEDtube Universal T8

Photometric data



LEDtube 16W G13 2500lm 865

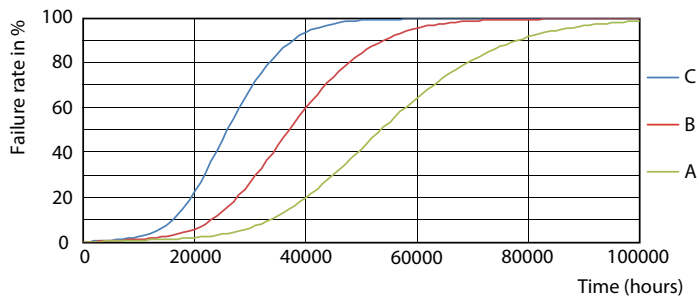
Lifetime



LEDtube 50K MAS LumenVsTc



LEDtube 50K-LED



LEDtube 50K FailureRate-LED



LEDtube 50K-LMP

Master Value LEDtube Universal T8

Lifetime



LEDtube 50K LifetimeVsTc-LED

