



MASTER LEDtube EM/ Mains



MASTER LEDtube 1500mm HO 18.2W 840 T8

The Philips MASTER LEDtube integrates a LED light source into a traditional fluorescent form factor. Its unique design creates a perfectly uniform visual appearance which cannot be distinguished from traditional fluorescent. This product is the ideal solution for up lighting in general lighting applications.

Warnings and Safety

• -

Product data

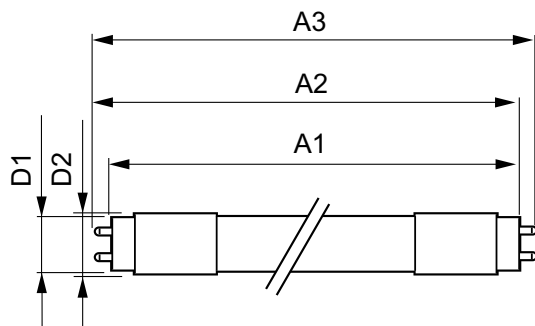
General Information		LLMF at end of nominal lifetime (nom.) 70 %	
Cap base	G13 ROT (Rotating) [Medium Bi-Pin Fluorescent]	Operating and Electrical	
EU RoHS compliant	Yes	Input frequency	50 to 60 Hz
Nominal lifetime (nom.)	75000 h	Power (Rated) (Nom)	18.2 W
Switching cycle	200,000X	Lamp current (max.)	93 mA
	Sphere	Lamp current (min.)	77 mA
Light Technical		Starting time (nom.)	0.5 s
Colour Code	840 [CCT of 4,000 K]	Warm-up time to 60% light (nom.)	0.5 s
Beam Angle (Nom)	160 °	Power factor (nom.)	0.9
Luminous flux (nom.)	3100 lm	Voltage (Nom)	220-240 V
Colour designation	Cool White (CW)	Temperature	
Correlated Colour Temperature (Nom)	4000 K	T-ambient (max.)	45 °C
Luminous efficacy (rated) (nom.)	170.00 lm/W	T-ambient (min.)	-20 °C
Colour consistency	<6	T storage (max.)	65 °C
Colour rendering index (nom.)	80	T storage (min.)	-40 °C

MASTER LEDtube EM/Mains

T-Case maximum (nom.)	55 °C
Controls and Dimming	
Dimmable	No
Mechanical and Housing	
Lamp Finish	Frosted
Bulb material	Plastic
Product length	1500 mm
Bulb shape	Tube, double-ended
Approval and Application	
Energy Efficiency Class	C
Energy-saving product	Yes
Approval marks	TUV
Approval marks	RoHS compliance CE marking KEMA Keur certificate

Energy consumption kWh/1,000 hours	19 kWh
	403594
Product Data	
Full product code	871869959243100
Order product name	MASTER LEDtube 1500mm HO 18.2W 840 T8
EAN/UPC – product	8718699592431
Order code	59243100
SAP numerator – quantity per pack	1
Numerator – packs per outer box	10
SAP material	929001923002
SAP net weight (piece)	0.285 kg

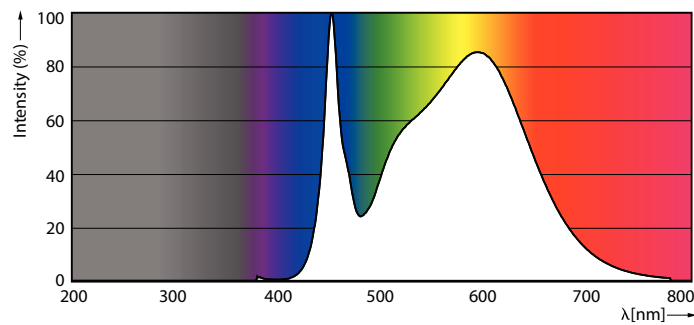
Dimensional drawing



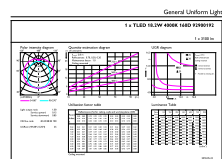
MASTER LEDtube 1500mm HO 18.2W 840 T8

Product	D1	D2	A1	A2	A3
MASTER LEDtube 1500mm HO 18.2W 840 T8	25.8 mm	28 mm	1498.8 mm	1505.9 mm	1513 mm

Photometric data



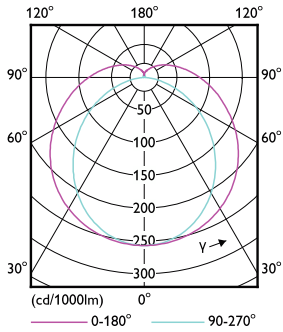
Spectral Power Distribution Colour



LEDtube MAS HO 18.2W G13 840 16D ND

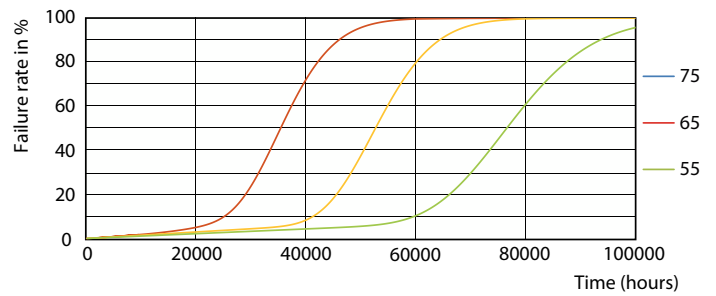
MASTER LEDtube EM/Mains

Photometric data



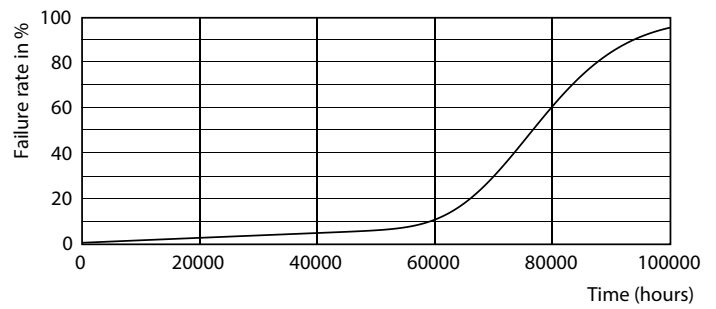
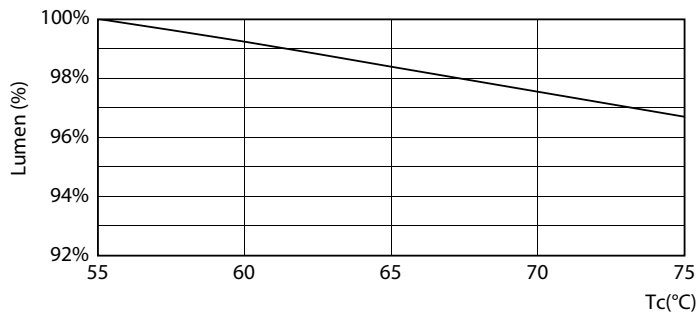
Light Distribution Diagram

Lifetime



Lumen Maintenance Diagram

FailureRate

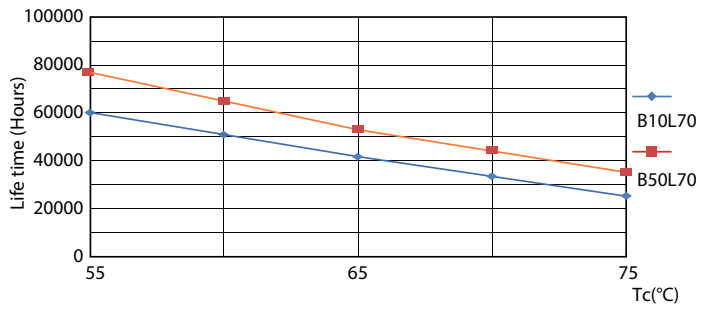


LumenVsTc

Life Expectancy Diagram

MASTER LEDtube EM/Mains

Lifetime



LifetimeVsTc

