

MASTER LEDtube EM/ Mains



MASTER LEDtube 1050mm 16W 830 T8

The Philips MASTER LEDtube integrates a LED light source into a traditional fluorescent form factor. Its unique design creates a perfectly uniform visual appearance which cannot be distinguished from traditional fluorescent. This product is the ideal solution for up lighting in general lighting applications.

Warnings and Safety

• -

Product data

General Information	
Cap base	G13 ROT (Rotating) [Medium Bi-Pin Fluorescent]
EU RoHS compliant	Yes
Nominal lifetime (nom.)	70000 h
Switching cycle	200,000X
	Sphere

Light Technical	
Colour Code	830 [CCT of 3,000 K]
Beam Angle (Nom)	160 °
Luminous flux (nom.)	2300 lm
Colour designation	White (WH)
Correlated Colour Temperature (Nom)	3000 K
Luminous efficacy (rated) (nom.)	143.00 lm/W
Colour consistency	<6
Colour rendering index (nom.)	80

Operating and Electrical	
Input frequency	50 to 60 Hz
Power (Rated) (Nom)	16 W
Lamp current (max.)	83 mA
Lamp current (min.)	68 mA
Starting time (nom.)	0.5 s
Warm-up time to 60% light (nom.)	0.5 s
Power factor (nom.)	0.9
Voltage (Nom)	220-240 V

Temperature	
T-ambient (max.)	45 °C
T-ambient (min.)	-20 °C
T storage (max.)	65 °C
T storage (min.)	-40 °C

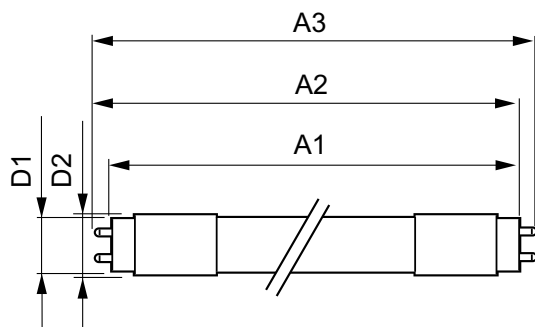
LLMF at end of nominal lifetime (nom.) 70 %	
---	--

MASTER LEDtube EM/Mains

T-Case maximum (nom.)	55 °C
Controls and Dimming	
Dimmable	No
Mechanical and Housing	
Lamp Finish	Frosted
Bulb material	Plastic
Product length	1100 mm
Bulb shape	Tube, double-ended
Approval and Application	
Energy Efficiency Class	D
Energy-saving product	Yes
Approval marks	RoHS compliance CE marking KEMA Keur certificate

Energy consumption kWh/1,000 hours	16 kWh
	403579
Product Data	
Full product code	871869672855000
Order product name	MASTER LEDtube 1050mm 16W 830 T8
EAN/UPC – product	8718696728550
Order code	72855000
SAP numerator – quantity per pack	1
Numerator – packs per outer box	10
SAP material	929001375602
SAP net weight (piece)	0.212 kg

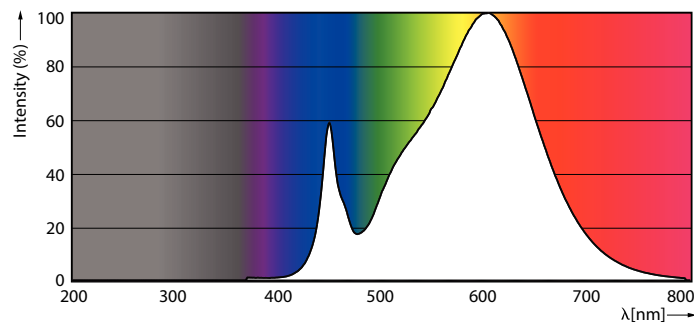
Dimensional drawing



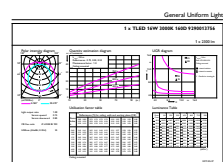
TLED 220-240V 16-38W 2300lm 3000K G13 ND

Product	D1	D2	A1	A2	A3
MASTER LEDtube 1050mm 16W 830 T8	25.8 mm	28 mm	1045.8 mm	1052.9 mm	1060 mm

Photometric data



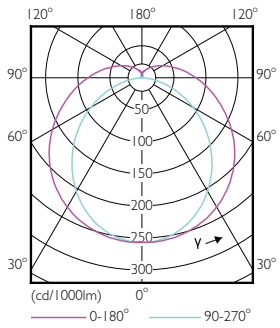
LEDtube 600mm 8W G5 830 1000lm



LEDtube MAS 16W G13 830 ND

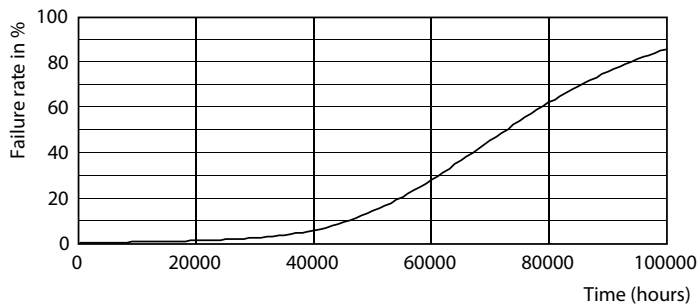
MASTER LEDtube EM/Mains

Photometric data

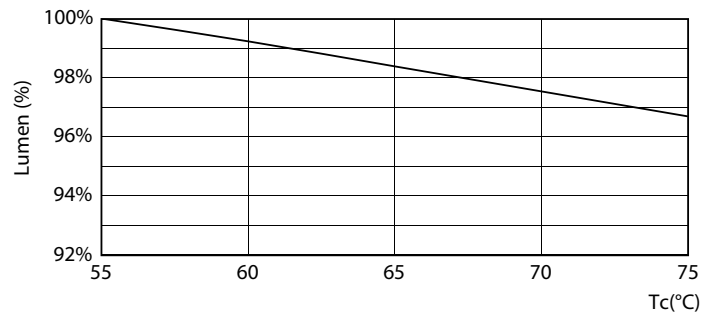


LEDtube MAS 16W G13 830 ND

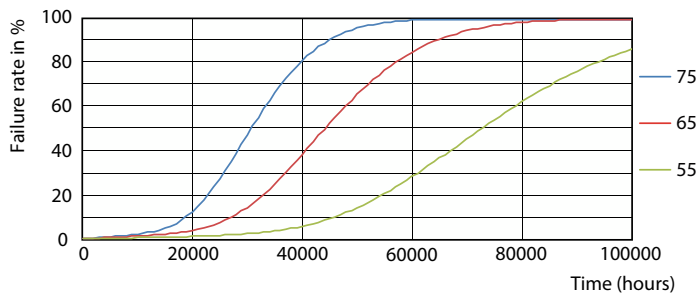
Lifetime



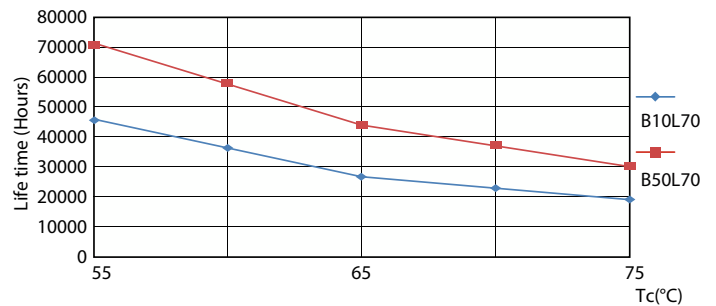
LEDtube_70K-LED



LEDtube MAS SLR 18,2W 70K LumenVsTc-LMP-LMP



LEDtube MAS SLR 18,2W 70K FailureRate-LED-LED



LEDtube MAS SLR 18,2W 70K LifetimeVsTc-LED-LED

MASTER LEDtube EM/Mains

Lifetime



LEDtube_70K-LMP

