



MASTER LEDtube EM/ Mains



MASTER LEDtube 600mm HO 8W865 T8

The Philips MASTER LEDtube integrates a LED light source into a traditional fluorescent form factor. Its unique design creates a perfectly uniform visual appearance which cannot be distinguished from traditional fluorescent. This product is the ideal solution for up lighting in general lighting applications.

Warnings and Safety

• -

Product data

General Information		LLMF at end of nominal lifetime (nom.) 70 %	
Cap base	G13 ROT (Rotating) [Medium Bi-Pin Fluorescent]		
EU RoHS compliant	Yes		
Nominal lifetime (nom.)	75000 h		
Switching cycle	200,000X		
	Sphere		
Light Technical		Operating and Electrical	
Colour Code	865 [CCT of 6,500 K]	Input frequency	50 to 60 Hz
Beam Angle (Nom)	160 °	Power (Rated) (Nom)	8 W
Luminous flux (nom.)	1050 lm	Lamp current (max.)	42 mA
Colour designation	Cool Daylight	Lamp current (min.)	36 mA
Correlated Colour Temperature (Nom)	6500 K	Starting time (nom.)	0.5 s
Luminous efficacy (rated) (nom.)	131.00 lm/W	Warm-up time to 60% light (nom.)	0.5 s
Colour consistency	<6	Power factor (nom.)	0.9
Colour rendering index (nom.)	83	Voltage (Nom)	220-240 V
		Temperature	
		T-ambient (max.)	35 °C
		T-ambient (min.)	-20 °C
		T storage (max.)	65 °C
		T storage (min.)	-40 °C

MASTER LEDtube EM/Mains

T-Case maximum (nom.)	50 °C
-----------------------	-------

Controls and Dimming

Dimmable	No
----------	----

Mechanical and Housing

Lamp Finish	Frosted
Bulb material	Plastic
Product length	600 mm
Bulb shape	Tube, double-ended

Approval and Application

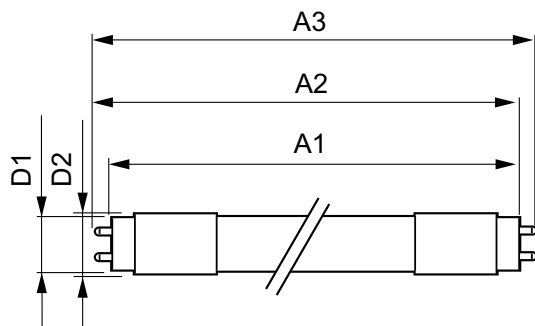
Energy Efficiency Class	E
Energy-saving product	Yes
Approval marks	TUV
Approval marks	RoHS compliance CE marking KEMA Keur certificate

Energy consumption kWh/1,000 hours	8 kWh
	465200

Product Data

Full product code	871869669751100
Order product name	MASTER LEDtube 600mm HO 8W865 T8
EAN/UPC – product	8718696697511
Order code	69751100
SAP numerator – quantity per pack	1
Numerator – packs per outer box	10
SAP material	929001307202
SAP net weight (piece)	0.120 kg

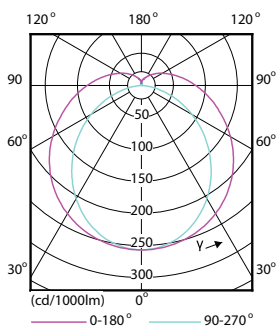
Dimensional drawing



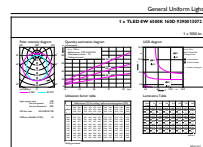
MASTER LEDtube 600mm HO 8W865 T8

Product	D1	D2	A1	A2	A3
MASTER LEDtube 600mm HO 8W865 T8	25.78 mm	28 mm	588.5 mm	595.5 mm	602.5 mm

Photometric data



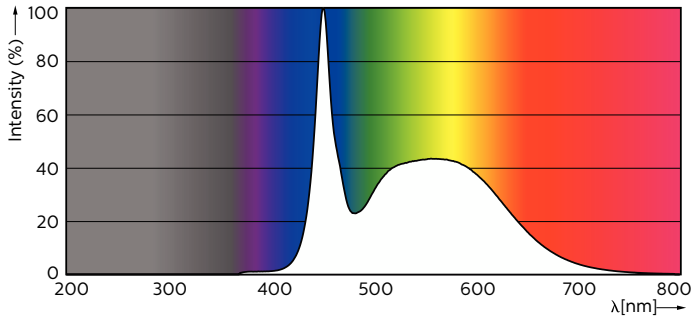
Light Distribution Diagram



General uniform lighting

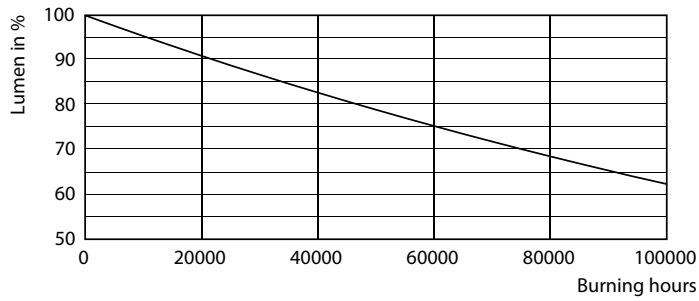
MASTER LEDtube EM/Mains

Photometric data

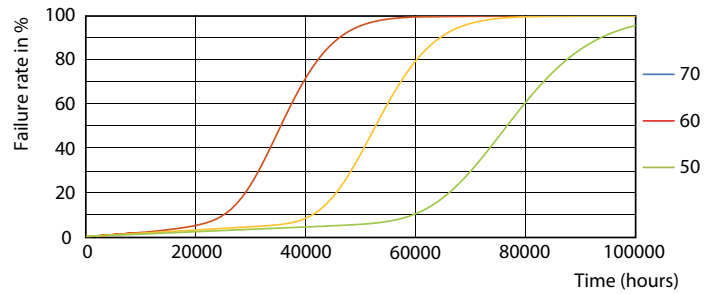


Spectral Power Distribution Colour

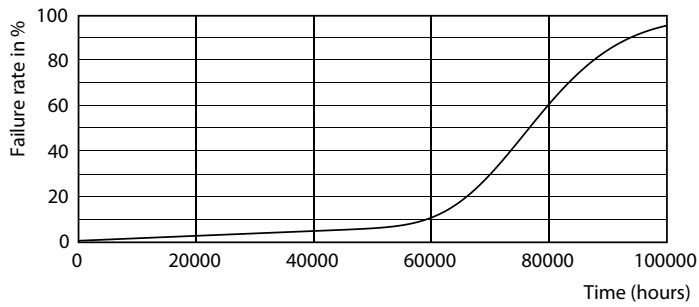
Lifetime



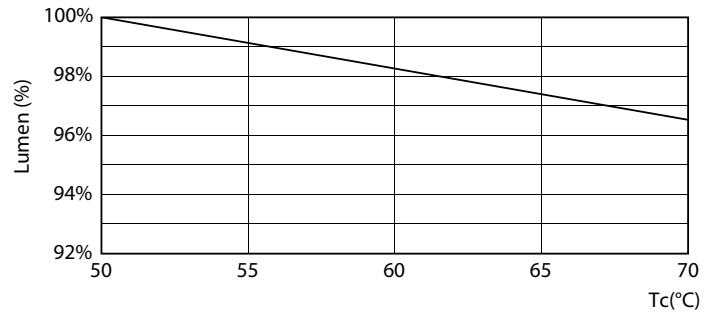
Lumen Maintenance Diagram



FailureRate



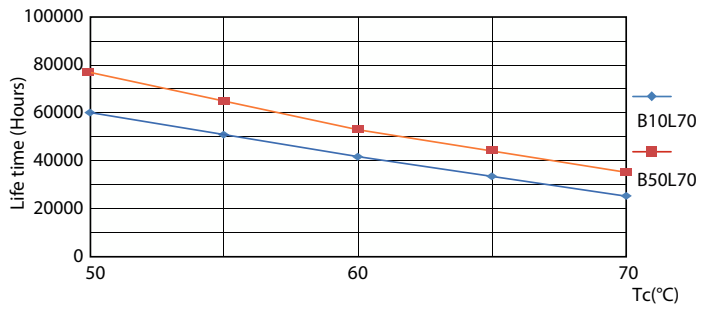
Life Expectancy Diagram



LumenVsTc

MASTER LEDtube EM/Mains

Lifetime



LifetimeVsTc

