



MASTER LEDtube EM/ Mains



MASTER LEDtube 600mm HO 8W840 T8

The Philips MASTER LEDtube integrates a LED light source into a traditional fluorescent form factor. Its unique design creates a perfectly uniform visual appearance which cannot be distinguished from traditional fluorescent. This product is the ideal solution for up lighting in general lighting applications.

Warnings and Safety

• -

Product data

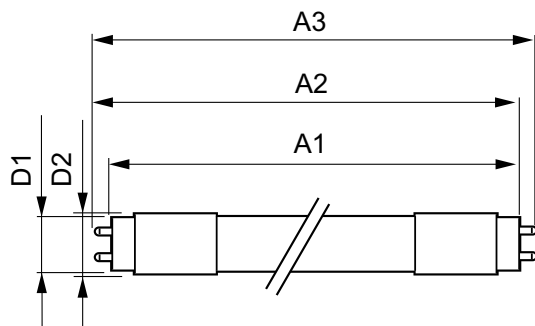
General Information		LLMF at end of nominal lifetime (nom.) 70 %	
Cap base	G13 ROT (Rotating) [Medium Bi-Pin Fluorescent]	Operating and Electrical	
EU RoHS compliant	Yes	Input frequency	50 to 60 Hz
Nominal lifetime (nom.)	75000 h	Power (Rated) (Nom)	8 W
Switching cycle	200,000X	Lamp current (max.)	42 mA
	Sphere	Lamp current (min.)	36 mA
Light Technical		Starting time (nom.)	0.5 s
Colour Code	840 [CCT of 4,000 K]	Warm-up time to 60% light (nom.)	0.5 s
Beam Angle (Nom)	160 °	Power factor (nom.)	0.9
Luminous flux (nom.)	1050 lm	Voltage (Nom)	220-240 V
Colour designation	Cool White (CW)	Temperature	
Correlated Colour Temperature (Nom)	4000 K	T-ambient (max.)	35 °C
Luminous efficacy (rated) (nom.)	131.00 lm/W	T-ambient (min.)	-20 °C
Colour consistency	<6	T storage (max.)	65 °C
Colour rendering index (nom.)	83	T storage (min.)	-40 °C

MASTER LEDtube EM/Mains

T-Case maximum (nom.)	50 °C
Controls and Dimming	
Dimmable	No
Mechanical and Housing	
Lamp Finish	Frosted
Bulb material	Plastic
Product length	600 mm
Bulb shape	Tube, double-ended
Approval and Application	
Energy Efficiency Class	E
Energy-saving product	Yes
Approval marks	TUV
Approval marks	RoHS compliance CE marking KEMA Keur certificate

Energy consumption kWh/1,000 hours	8 kWh
	465199
Product Data	
Full product code	871869669749800
Order product name	MASTER LEDtube 600mm HO 8W840 T8
EAN/UPC – product	8718696697498
Order code	69749800
SAP numerator – quantity per pack	1
Numerator – packs per outer box	10
SAP material	929001307102
SAP net weight (piece)	0.120 kg

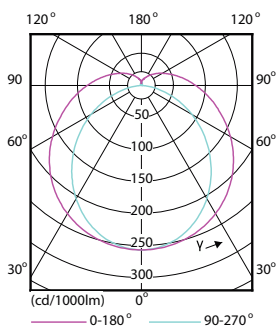
Dimensional drawing



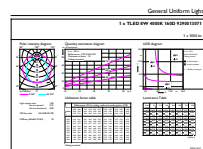
MASTER LEDtube 600mm HO 8W840 T8

Product	D1	D2	A1	A2	A3
MASTER LEDtube 600mm HO 8W840 T8	25.78 mm	28 mm	588.5 mm	595.5 mm	602.5 mm

Photometric data



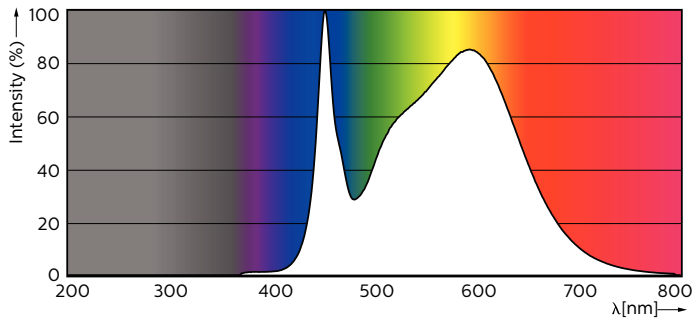
Light Distribution Diagram



General uniform lighting

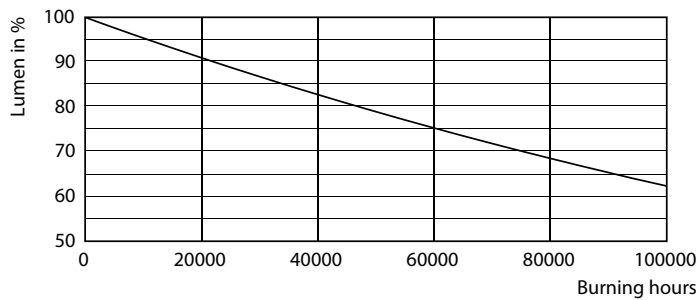
MASTER LEDtube EM/Mains

Photometric data

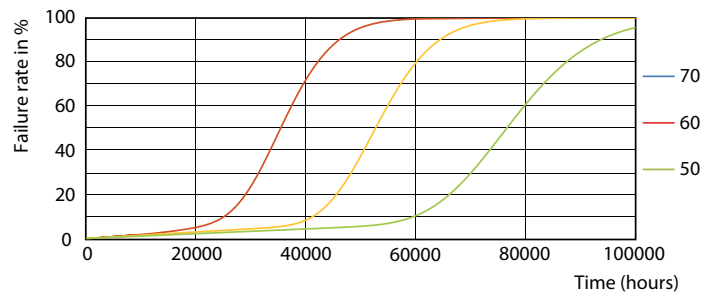


Spectral Power Distribution Colour

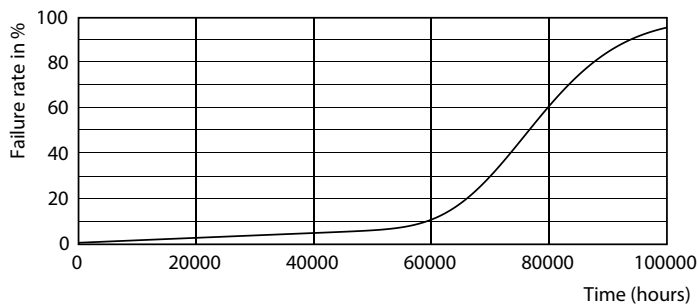
Lifetime



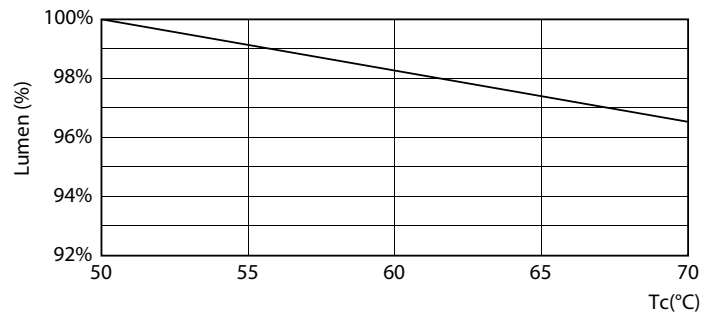
Lumen Maintenance Diagram



FailureRate



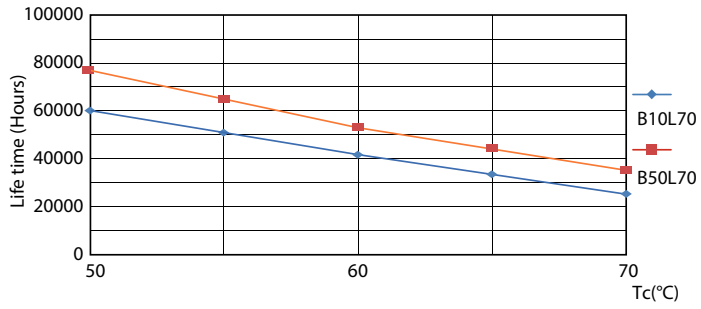
Life Expectancy Diagram



LumenVsTc

MASTER LEDtube EM/Mains

Lifetime



LifetimeVsTc

