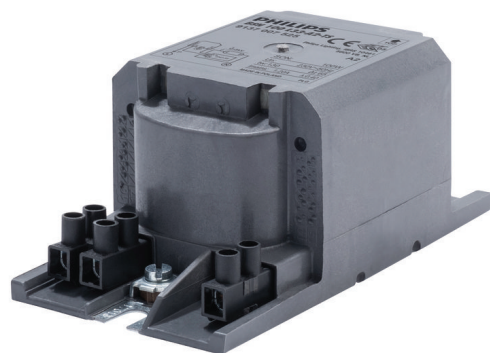


PHILIPS

Lighting



HID-HeavyDuty BSN semi-parallel for SON/CDO/MH/HPI

BSN 100 L33-A2-TS 230V 50Hz

Encapsulated electromagnetic copper/iron ballasts for use with an external semi-parallel ignitor for CDM, CDO, MH, HPI (Plus) and SON lamps

Product data

General Information

Remarks	UK importer address: Signify Commercial UK Limited, 3, Guildford Business Park, GU2 8XG
Application code	L33-A2-TS
Design	HD1-123
Lamp type	SON
Number of lamps	1 piece/unit

Operating and Electrical

Input Voltage	230 V
Input frequency	50 Hz
Power factor 100% load (nom.)	0.85
Mains voltage performance (AC)	-8%+6%
Mains voltage safety (AC)	-10%+10%
Input current with PF correction	0.6 A
Input current without PF Correction	1.2 A
Power factor without PF compensation (nom.)	0.4

Power losses (nom.)	14.8 W
---------------------	--------

Wiring

Wire strip length	6.0 mm
Ballast contact wire cross section	2.5 mm ²
Connector type	Screw

System characteristics

Rated ballast-lamp power	100 W
Recommended ignitor	for SON lamps ignitor SND 58 (913700185166) or series digital SUD40 (913700193591)

Temperature

T storage (max.)	130 °C
T storage (min.)	-30 °C
T-winding (max.)	130 °C
Delta-T normal conditions	65 °C

HID-HeavyDuty BSN semi-parallel for SON/CDO/MH/HPI

Approval and Application

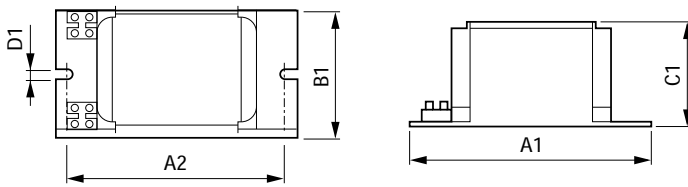
Active temperature protection	Yes
Approval marks	CE marking ENEC certificate

Product Data

Full product code	871869674094100
Order product name	BSN 100 L33-A2-TS 230V 50Hz
EAN/UPC – product	8718696740941

Order code	74094100
SAP numerator – quantity per pack	1
Numerator – packs per outer box	6
SAP material	913700752526
SAP net weight (piece)	1.380 kg

Dimensional drawing



Product	A1	A2	B1	C1	D1
BSN 100 L33-A2-TS 230V 50Hz	123 mm	108 mm	65 mm	53 mm	6.2 mm

BSN 100 L33-A2-TS 230V 50Hz

