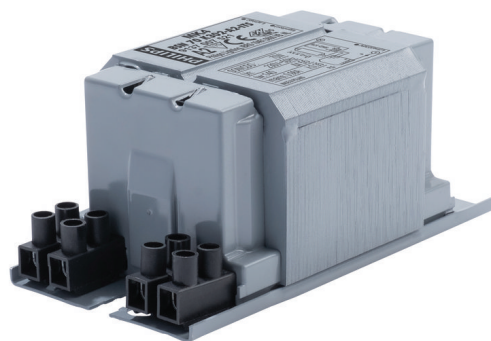


PHILIPS

Lighting



HID-Basic BSN/BMH MK4 semi-parallel for SON/CDO/CDM/MH/ HPI

BSN 70 K302-A2-ITS 230V 50Hz

Impregnated electromagnetic copper ballasts for use with an external semi-parallel ignitor for CDM, CDO, MH, HPI (Plus) and SON lamps

Product data

General Information

Remarks UK importer address: Signify Commercial
UK Limited, 3, Guildford Business Park, GU2
8XG

Application code K302-A2-ITS

Design BC1-118

Lamp type SON/CDO

Number of lamps 1 piece/unit

Operating and Electrical

Input Voltage 230 V

Input frequency 50 Hz

Power factor 100% load (nom.) 0.85

Mains voltage performance (AC) -8%~+6%

Mains voltage safety (AC) -10%~+10%

Input current with PF correction 0.45 A

Input current without PF Correction 0.98 A

Power factor without PF compensation (nom.) 0.35

Power losses (nom.) 11.7 W

Wiring

Wire strip length 6.0 mm

Ballast contact wire cross section 2.5 mm²

Connector type Screw

System characteristics

Capacitor 12µF/250V

Rated ballast-lamp power 70 W

Recommended ignitor for SON/CDO/CDM lamps ignitor SKD 578
(913700655366) or series digital SUD10
(913700195891)

HID-Basic BSN/BMH MK4 semi-parallel for SON/CDO/CDM/MH/HPI

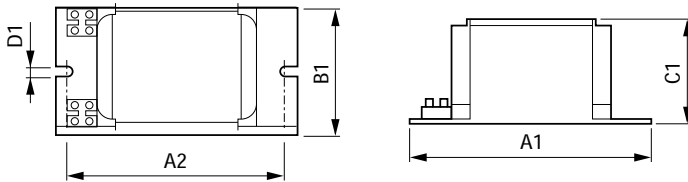
Temperature	
T storage (max.)	130 °C
T storage (min.)	-30 °C
T-winding (max.)	140 °C
Delta-T normal conditions	55 °C

Approval and Application	
Active temperature protection	Yes
Approval marks	CE marking ENEC certificate

Product Data	
Full product code	871869674082800

Order product name	BSN 70 K302-A2-ITS 230V 50Hz
EAN/UPC – product	8718696740828
Order code	74082800
SAP numerator – quantity per pack	1
Numerator – packs per outer box	6
SAP material	913700752126
SAP net weight (piece)	1.260 kg

Dimensional drawing



Product	A1	A2	B1	C1	D1
BSN 70 K302-A2-ITS 230V 50Hz	118 mm	94 mm	61 mm	52 mm	6.2 mm

BSN 70 K302-A2-ITS 230V 50Hz

