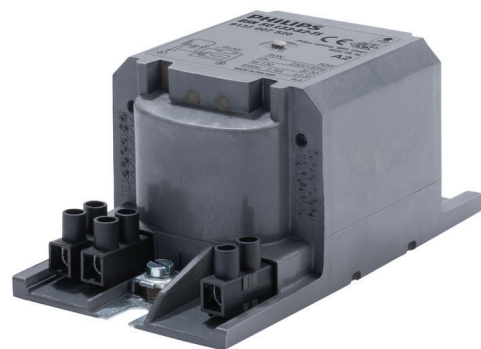


# PHILIPS

## Lighting



# HID-HeavyDuty BSN semi-parallel for SON/CDO/MH/HPI

## BSN 50 L33-A2-TS 230V 50Hz

Encapsulated electromagnetic copper/iron ballasts for use with an external semi-parallel ignitor for CDM, CDO, MH, HPI (Plus) and SON lamps

### Product data

#### General Information

Remarks	UK importer address: Signify Commercial UK Limited, 3, Guildford Business Park, GU2 8XG
Application code	L33-A2-TS
Design	HD1-118
Lamp type	SON
Number of lamps	1 piece/unit

#### Operating and Electrical

Input Voltage	230 V
Input frequency	50 Hz
Power factor 100% load (nom.)	0.85
Mains voltage performance (AC)	-8%~+6%
Mains voltage safety (AC)	-10%~+10%
Input current with PF correction	0.35 A
Input current without PF Correction	0.76 A
Power factor without PF compensation (nom.)	0.35

Power losses (nom.)	8.6 W
---------------------	-------

#### Wiring

Wire strip length	6.0 mm
Ballast contact wire cross section	2.5 mm <sup>2</sup>
Connector type	Screw

#### System characteristics

Capacitor	10µF/250V
Rated ballast-lamp power	50 W
Recommended ignitor	for SON lamps ignitor SND57 (913700184966) or series digital SUD10 (913700195891)

#### Temperature

T storage (max.)	130 °C
T storage (min.)	-30 °C
T-winding (max.)	130 °C
Delta-T normal conditions	50 °C

# HID-HeavyDuty BSN semi-parallel for SON/CDO/MH/HPI

## Approval and Application

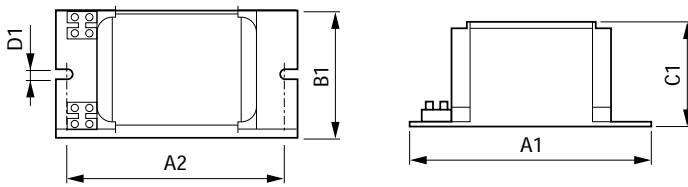
Active temperature protection	Yes
Approval marks	CE marking ENEC certificate

## Product Data

Full product code	871869674080400
Order product name	BSN 50 L33-A2-TS 230V 50Hz
EAN/UPC – product	8718696740804

Order code	74080400
SAP numerator – quantity per pack	1
Numerator – packs per outer box	6
SAP material	913700752026
SAP net weight (piece)	1.270 kg

## Dimensional drawing



Product	A1	A2	B1	C1	D1
BSN 50 L33-A2-TS 230V 50Hz	118 mm	103 mm	65 mm	53 mm	6.2 mm

BSN 50 L33-A2-TS 230V 50Hz

