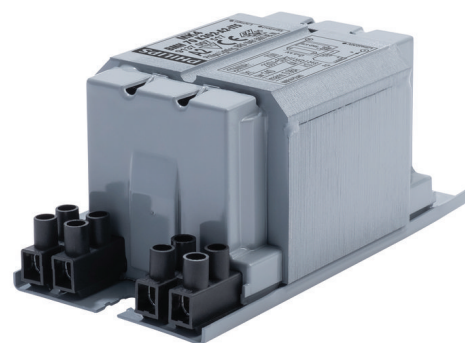


PHILIPS

Lighting



HID-Basic BSN/BMH semi-parallel for SON/CDO/CDM/MH/ HPI

BMH 70 K302-A2-ITS 230V 50Hz

Impregnated electromagnetic copper ballasts for use with an external semi-parallel ignitor for CDM, CDO, MH, HPI (Plus) and SON lamps

Product data

General Information

Remarks	UK importer address: Signify Commercial UK Limited, 3, Guildford Business Park, GU2 8XG
Application code	K302-A2-ITS
Design	BC1-118
Lamp type	MH
Number of lamps	1 piece/unit

Operating and Electrical

Input Voltage	230 V
Input frequency	50 Hz
Power factor 100% load (nom.)	0.85
Mains voltage performance (AC)	-8%~+6%
Mains voltage safety (AC)	-10%~+10%
Input current with PF correction	0.45 A
Input current without PF Correction	0.98 A

Power factor without PF compensation (nom.)	0.35
---	------

Power losses (nom.)	11.7 W
---------------------	--------

Wiring

Wire strip length	6.0 mm
Ballast contact wire cross section	2.5 mm ²
Connector type	Screw

System characteristics

Capacitor	12μF/250V
Rated ballast-lamp power	70 W
Recommended ignitor	for SON/CDO/CDM lamps ignitor SKD 578 (913700655366) or series digital SUD40 (913700193591)

HID-Basic BSN/BMH semi-parallel for SON/CDO/CDM/MH/HPI

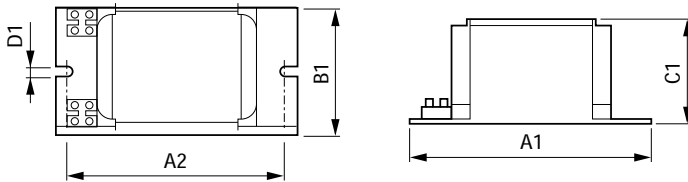
Temperature	
T storage (max.)	130 °C
T storage (min.)	-30 °C
T-winding (max.)	140 °C
Delta-T normal conditions	55 °C

Approval and Application	
Active temperature protection	Yes
Approval marks	CE marking ENEC certificate

Product Data	
Full product code	871869674074300

Order product name	BMH 70 K302-A2-ITS 230V 50Hz
EAN/UPC – product	8718696740743
Order code	74074300
SAP numerator – quantity per pack	1
Numerator – packs per outer box	6
SAP material	913700751726
SAP net weight (piece)	1.260 kg

Dimensional drawing



Product	A1	A2	B1	C1	D1
BMH 70 K302-A2-ITS 230V 50Hz	118 mm	94 mm	61 mm	52 mm	6.2 mm

BMH 70 K302-A2-ITS 230V 50Hz

