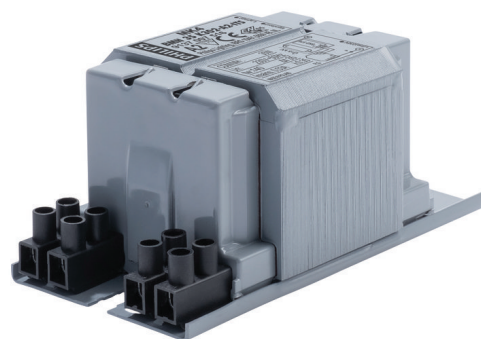


PHILIPS

Lighting



HID-Basic BSN/BMH semi-parallel for SON/CDO/CDM/MH/ HPI

BMH 35 K302-A2-ITS 230V 50Hz

Impregnated electromagnetic copper ballasts for use with an external semi-parallel ignitor for CDM, CDO, MH, HPI (Plus) and SON lamps

Product data

General Information

Remarks	UK importer address: Signify Commercial UK Limited, 3, Guildford Business Park, GU2 8XG
---------	---

Application code K302-A2-ITS

Design BC1-118

Lamp type MH

Number of lamps 1 piece/unit

Operating and Electrical

Input Voltage 230 V

Input frequency 50 Hz

Power factor 100% load (nom.) 0.85

Mains voltage performance (AC) -8% - +6%

Mains voltage safety (AC) -10% - +10%

Input current with PF correction 0.36 A

Input current without PF Correction 0.53 A

Power factor without PF compensation (nom.) 0.35

Power losses (nom.) 6 W

Wiring

Wire strip length 6.0 mm

Ballast contact wire cross section 2.5 mm²

Connector type Screw

System characteristics

Capacitor 6µF/250V

Rated ballast-lamp power 35 W

Recommended ignitor for SON/CDO/CDM lamps ignitor SKD 578 (913700655366) or series digital SUD40 (913700193591) only CDM

HID-Basic BSN/BMH semi-parallel for SON/CDO/CDM/MH/HPI

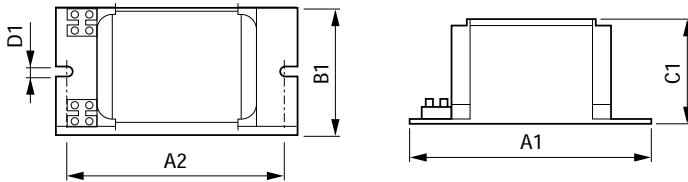
Temperature	
T storage (max.)	130 °C
T storage (min.)	-30 °C
T-winding (max.)	140 °C
Delta-T normal conditions	35 °C

Approval and Application	
Active temperature protection	Yes
Approval marks	CE marking ENEC certificate

Product Data	
Full product code	871869674068200

Order product name	BMH 35 K302-A2-ITS 230V 50Hz
EAN/UPC – product	8718696740682
Order code	74068200
SAP numerator – quantity per pack	1
Numerator – packs per outer box	6
SAP material	913700751626
SAP net weight (piece)	1.140 kg

Dimensional drawing



Product	A1	A2	B1	C1	D1
BMH 35 K302-A2-ITS 230V 50Hz	118 mm	94 mm	61 mm	52 mm	6.2 mm

BMH 35 K302-A2-ITS 230V 50Hz

