



HID-Basic BSN/BMH MK4 semi-parallel for SON/CDO/CDM/MH/ HPI

BSN 400 K407-ITS 230/240V 50Hz BC3-166

Impregnated electromagnetic copper ballasts for use with an external semi-parallel ignitor for CDM, CDO, MH, HPI (Plus) and SON lamps

Product data

General Information	
Remarks	UK importer address: Signify Commercial UK Limited, 3, Guildford Business Park, GU2 8XG
Application code	K407-A2-ITS
Design	BC3-166
Lamp type	SON/HPI
Number of lamps	1 piece/unit
Operating and Electrical	
Input Voltage	230 V (default) or 240 V
Input frequency	50 Hz
Power factor 100% load (nom.)	0.85
Mains voltage performance (AC)	-8%--+6%
Mains voltage safety (AC)	-10%--+10%
Input current with PF correction	2.20 A
Input current without PF Correction	4.45 A

Power factor without PF compensation (nom.)	0.40
Power losses (nom.)	33/34.5 W
Wiring	
Wire strip length	7.0 mm
Ballast contact wire cross section	1.50-4.00 mm ²
Connector type	Screw
System characteristics	
Capacitor	45µF/250V
Rated ballast-lamp power	400 W
Recommended ignitor	for SON/CDO/CDM lamps ignitor SKD 578 (913700655366) or series digital SUD40 (913700193591)

HID-Basic BSN/BMH MK4 semi-parallel for SON/CDO/CDM/MH/HPI

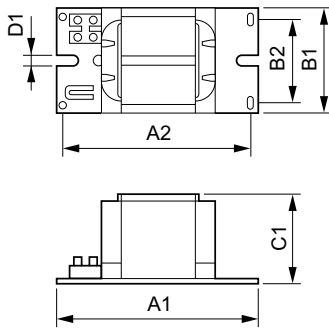
Temperature	
T storage (max.)	130 °C
T storage (min.)	-30 °C
T-winding (max.)	130 °C
Delta-T normal conditions	80 °C

Approval and Application	
Active temperature protection	Yes
Approval marks	CE marking ENEC certificate

Order product name	BSN 400 K407-A2-ITS 230/240V 50Hz BC3
EAN/UPC – product	8711500881571
Order code	88704400
Local order code	BSN400K407ITS
SAP numerator – quantity per pack	1
Numerator – packs per outer box	2
SAP material	913700277826
SAP net weight (piece)	4.950 kg

Product Data	
Full product code	872790088704400

Dimensional drawing



Product	D1	C1	A1	A2	B1	B2
BSN 400 K407-A2-ITS 230/240V 50Hz	6.5 mm	83.0 mm	166.0 mm	145.0 mm	97.0 mm	78.5 mm
BC3						

BSN 400 K407-ITS 230/240V 50Hz BC3-166

